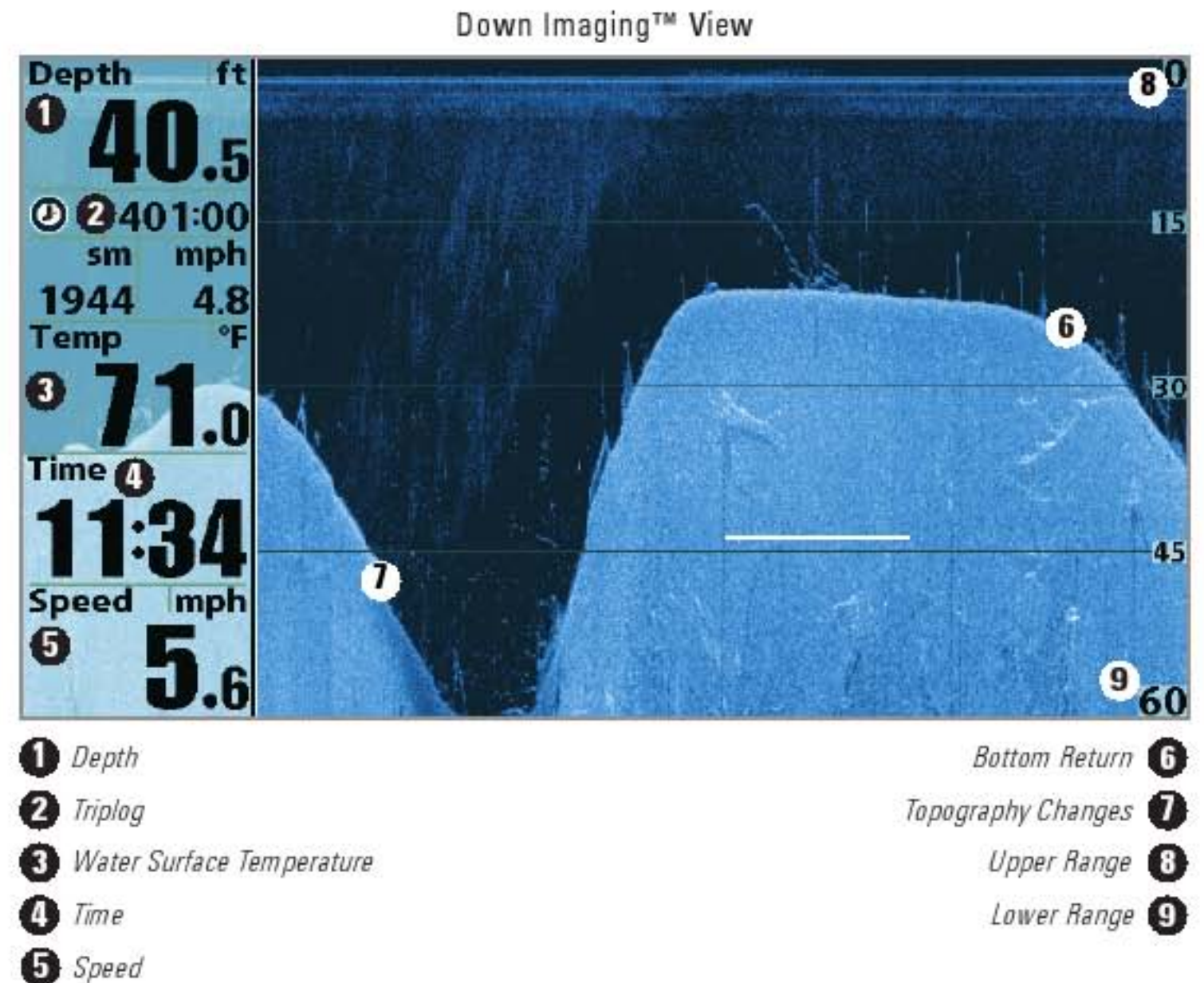


Down Imaging™ View (898c SI and 998c SI only)

Down Imaging™ View displays the down beam portion of the data from the Side Imaging® beams. The Down Imaging™ results are displayed in a “picture-like” image on the screen in 2D format. Sonar returns are charted on the right side of the display. As new information is received, the historical information scrolls left across the display.

- **Coverage:** The Down Imaging™ coverage is always very thin front to back, and the side to side width can be adjusted (see *Sonar Menu Tab: Down Imaging™ Beam Width*).
- **Down Imaging™ X-Press™ Menu:** Press the MENU key once to access the Down Imaging™ X-Press™ Menu. You can set the sensitivity of the sonar to see more or less detail, the chart scrolling speed, and the display color palette (see *Down Imaging™ X-Press™ Menu*).
- **Freeze Frame:** Press any arrow on the 4-WAY Cursor Control key, and the Down Imaging™ View will freeze and a cursor will appear on the screen. Move the cursor over a sonar return, and the depth of the sonar return you choose will be displayed in the cursor information box.

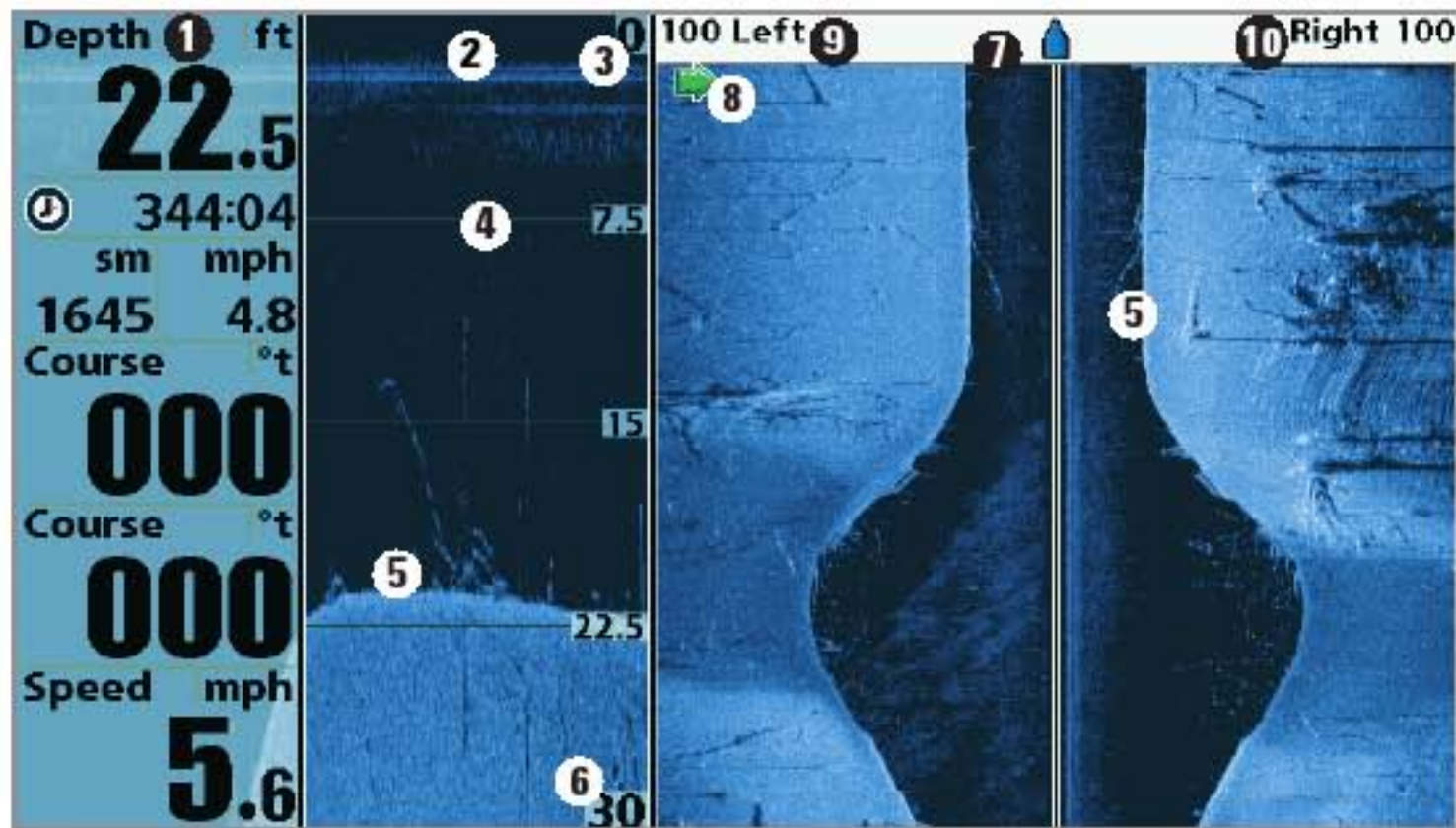


Down Imaging™/Side Imaging® Combo View

(898c SI and 998c SI only)

Down/Side Imaging® Combo View shows Down Imaging™ and Side Imaging® sonar information in a combination split screen.

Down Imaging™/Side Imaging® Combo View



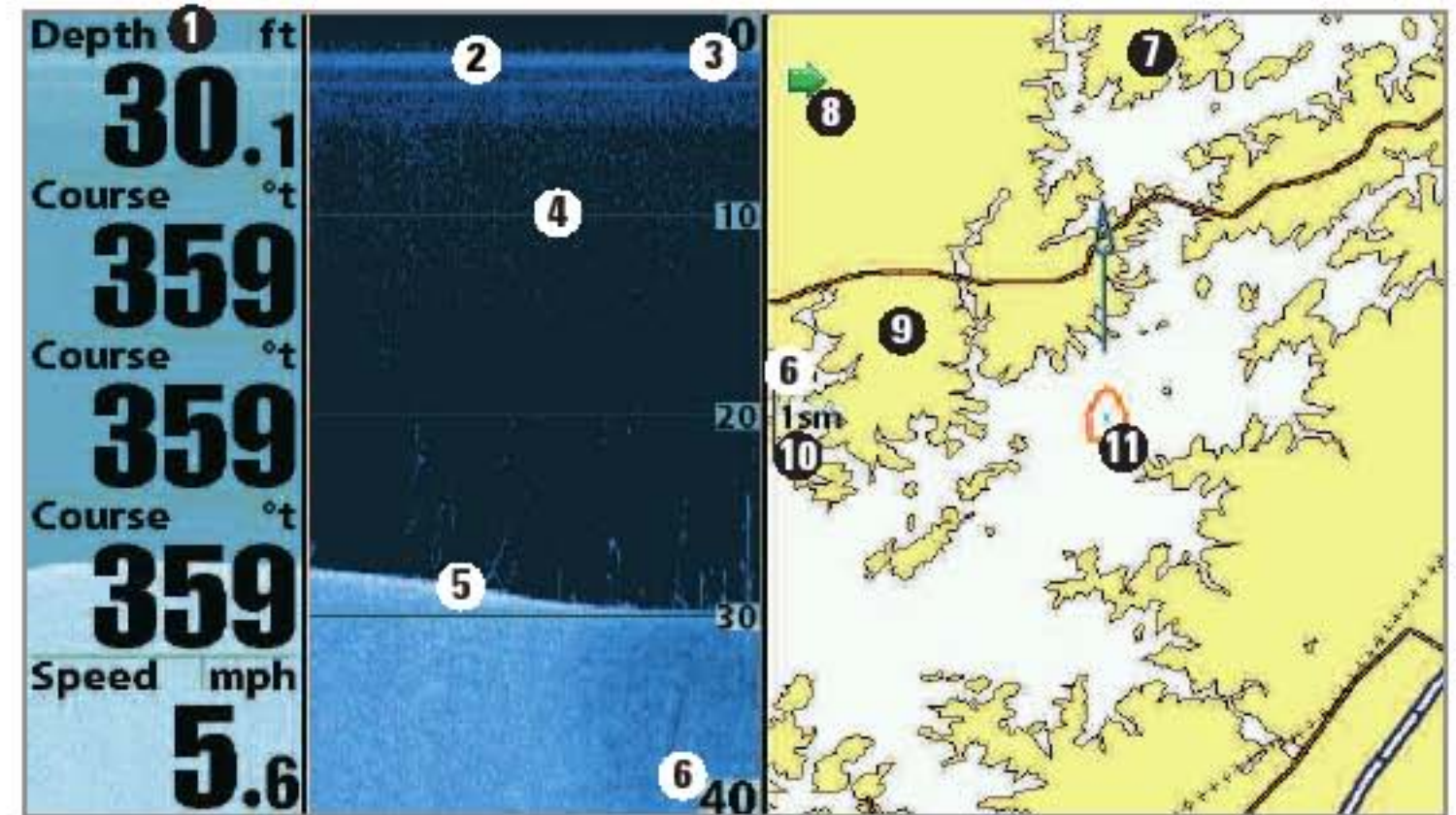
- ① Digital Readouts
- ② Down Imaging™ View Window
- ③ Upper Depth Range
- ④ Depth Lines
- ⑤ Bottom Return
- ⑥ Lower Depth Range
- ⑦ Side Imaging® View Window
- ⑧ Green Arrow: Active Side
- ⑨ Side Imaging® Range (Left)
- ⑩ Side Imaging® Range (Right)

Chart/Down Imaging™ Combo View

(898c SI and 998c SI only)

Chart/Down Imaging™ Combo View shows Chart and Down Imaging™ information in a combination split screen.

Chart/Down Imaging™ Combo View



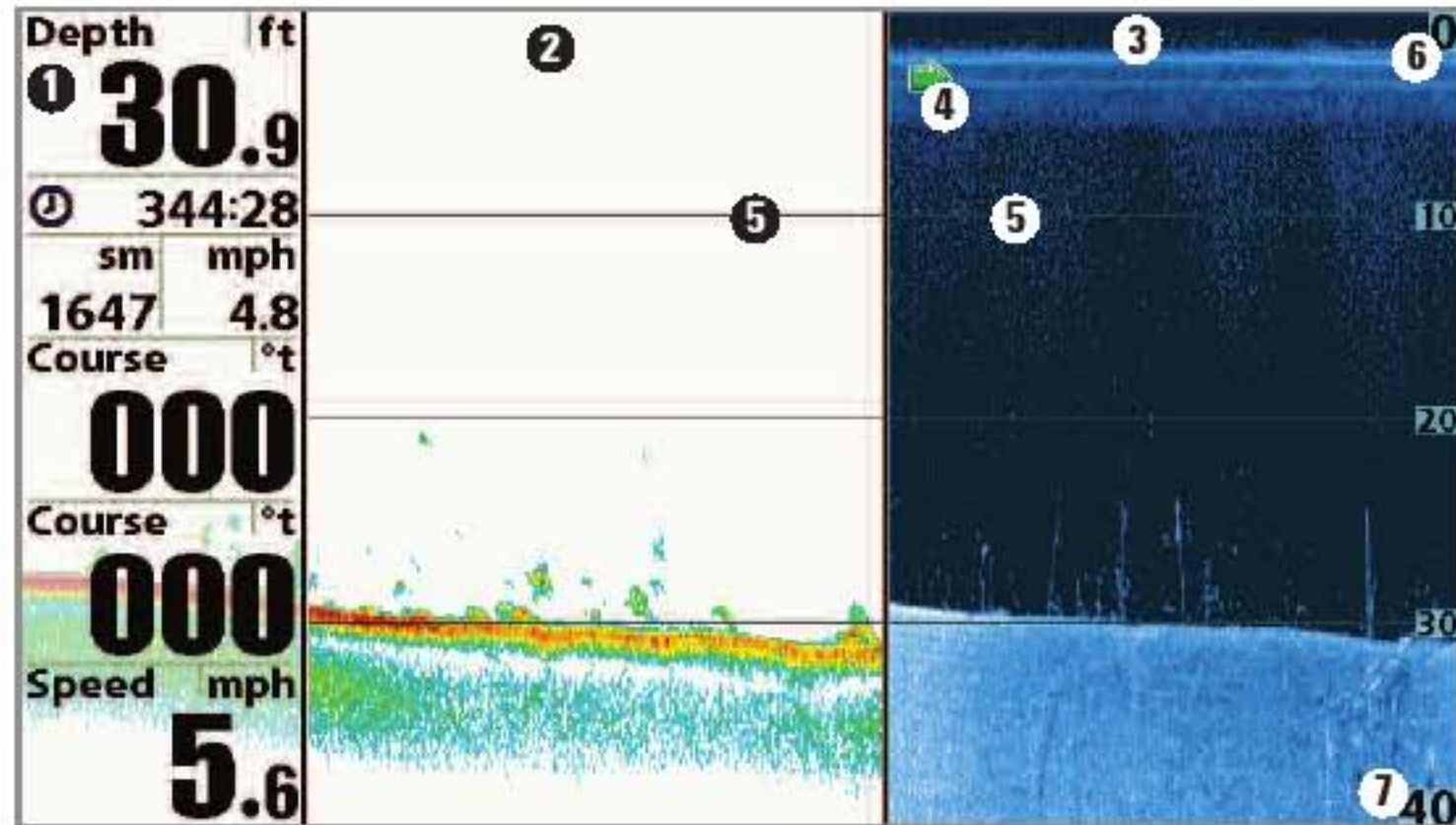
- ① Digital Readouts
- ② Down Imaging™ View Window
- ③ Upper Depth Range
- ④ Depth Lines
- ⑤ Bottom Return
- ⑥ Shadows
- ⑦ Chart View Window
- ⑧ Green Arrow: Active Side
- ⑨ Cartography
- ⑩ Map Scale
- ⑪ Boat Icon

Down Imaging™/Sonar Combo View

(898c SI and 998c SI only)

Down Imaging™/Sonar Combo View shows traditional Sonar information on the left and Down Imaging™ sonar information on the right.

Down Imaging™/Sonar Combo View



- ① Digital Readouts
- ② Sonar View Window
- ③ Down Imaging™ View Window

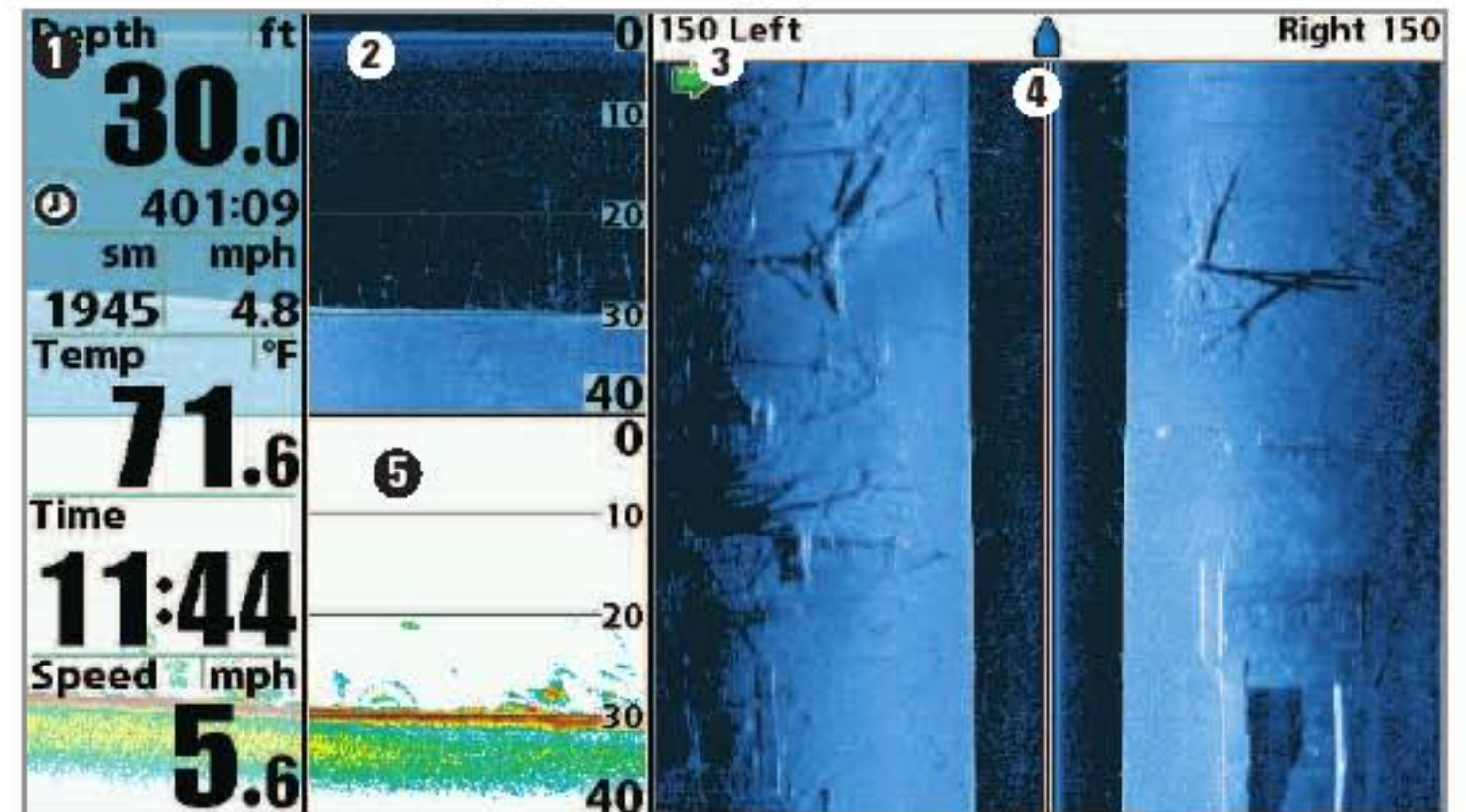
- Green Arrow: Active Side ④
- Depth Lines ⑤
- Upper Depth Range ⑥
- Lower Depth Range ⑦

Down Imaging™/Side Imaging®/Sonar Combo View

(898c SI and 998c SI only)

Down/Side Imaging/Sonar Combo View shows Down Imaging™ and traditional Sonar information on the left side of the screen, and Side Imaging® on the right side of the screen. If you use the active cursor on the left side of the screen, a cursor will appear in both the Sonar and Down Imaging™ views.

Down Imaging™/Side Imaging®/Sonar Combo View



- ① Digital Readouts
- ② Down Imaging™ View Window
- ③ Green Arrow: Active Side

- Side Imaging® View Window ④
- Sonar View Window ⑤



SI Range

Settings: 6 to 360 feet, or 2 to 120 meters
[International Models only], Default = 150 feet,
50 meters

SI Range sets the deepest range that will displayed in the Side Imaging® views. The range must be set manually.

Choose a low range number to focus on a shorter distance of the water column and see greater detail on the screen. Choose a higher range number to view farther into the water and see an overview of details on the screen.



Chart Speed

Settings: 1- 10, where 1 = Slow, 10 Fastest,
Default = 5

Chart Speed determines the speed at which the side sonar information moves down the display, and consequently the amount of detail shown. A **faster speed** shows more information in the Side Imaging® Views and is preferred by most anglers; however, the sonar information moves across the display quickly. A **slower speed** keeps the information on the display longer, which allows you to see an entire area.



SI Colors

Settings: Blue, Amber1, Amber2, Brown, Green,
Inverse, Gray, Green/Red, Default = Blue

SI Colors allows you to select which color palette you would like to use for the Side Imaging® display.

◀▶ Active Side	Left ▶
◀▶ Split Position	50
⊞ Down Sensitivity	Auto
↕ Upper Range	0ft
↕ Lower Range	Auto
⏩ Chart Speed	5
⊞ SI Colors	Blue
⊞ Cancel Navigation	

Down Imaging™ X-Press™ Menu

Down Imaging™ X-Press™ Menu

(Down Imaging™ Views only [898c SI, 998c SI])

The Down Imaging™ X-Press™ Menu provides a shortcut to your most frequently-used settings. Press the MENU key once while in any of the Down Imaging™ Views to access the Down Imaging™ X-Press™ Menu.

NOTE: Menu options can be expanded or simplified by setting the User Mode to Advanced or Normal. See Main Menu: User Mode for details.

◀▶ Active Side	Left ▶
----------------	--------

Active Side

(Combo Views only)

Settings: Left, Right, Default = Left

Active Side allows you to select a side of the screen in Combo View. After you choose an active side, you can apply menu settings and key commands to the view you've selected. The Active Side menu option is only available when a Combo View is on the screen (see *Views: Combo Views*).

- A green arrow on the Combo View points to the active side.
- When a menu is displayed in the active side, the non-active side of the screen will be grayed out.

◀▶ Split Position	50
Left	Right

Split Position

(Combo Views only)

Settings: Left, 30, 40, 50, 60, 70, Right, Default = Various

Split Position sets the size of the left side of the Combo View. Each Combo View can be set individually. The Split Position menu option is only available when a Combo View is on the screen (see *Views: Combo Views*).

- The number setting indicates the percentage taken up by the left side of the Combo View.
- Selecting Left sets the left side of the screen to its smallest setting.

 **Down Sensitivity Auto**
Auto  20

Down Sensitivity

Settings: Auto, 1 to 20, where Low = 1,
High = 20, Default = 10

Down Sensitivity controls how much detail is shown on the display.

Increase the Down Sensitivity to reveal weaker returns that may be of interest, especially in very clear water or greater depths. A high Down Imaging™ Sensitivity setting shows more sonar returns from small baitfish and suspended debris in the water; however if the Down Imaging™ Sensitivity is adjusted too high, the display may become too cluttered.

Decrease the Down Sensitivity to eliminate the clutter from the display that is sometimes present in murky or muddy water. If Down Imaging™ Sensitivity is adjusted too low, the display may not show many sonar returns that could be fish.

 **Upper Range** **0ft**
0  1490

Upper Range

(Advanced: Down Imaging™ Views only)

Settings: 0 to 1490 or 0 to 497 meters
[International models only], Default = 0

Upper Range sets the shallowest depth range that will be displayed on the Down Imaging™ Views. Upper Range is often used with Lower Range.

For example, if you are only interested in the area between 20 and 50 feet deep, you should set the Upper Depth Range to 20 and the Lower Depth Range to 50. The Down Imaging™ View will then show the 30 foot area between 20 and 50, and will not show the surface or the bottom (assuming the bottom is deeper than 50 feet), and will show greater detail for that area between 20 and 50 feet.

NOTE: A minimum distance of 10 feet will be maintained between the Upper and Lower Range regardless of the manual settings entered.



Lower Range

Settings: AUTO, 10 to 1500 ft, 3 to 500 m
[International Models only]; Default = AUTO

Lower Range sets the deepest depth range that will be displayed by the unit.

Auto: The Lower Range will be adjusted by the unit to follow the bottom automatically. Auto is the default setting.

Manual: You can adjust the Lower Range to lock the unit on a particular depth. **M** will be displayed in the lower right corner of the screen to indicate the unit is in Manual mode. Adjust the Upper and Lower Range together to view a specific depth range, especially when looking for fish or bottom structure.

For example, if you are fishing in 60 feet of water but are only interested in the first 30 feet (surface to a depth of 30 feet) you should set the Lower Depth Range limit to 30. The display will show the 0 to 30 foot range, which allows you to see a more detailed view than you would see if the display went all the way to the bottom.

***NOTE:** A minimum distance of 10 feet will be maintained between the Upper and Lower Range regardless of the settings entered manually.*



Chart Speed

Settings: 1-10, where 1 = Slow, 10 = Fastest,
Default = 5

Chart Speed determines the speed at which the sonar information moves across the display, and consequently the amount of detail shown.

A faster speed shows more information and is preferred by most anglers; however, the sonar information moves across the display quickly. A slower speed keeps the information on the display longer, but the bottom and fish details become compressed and may be difficult to interpret.



SI Colors

Settings: Blue, Amber1, Amber2, Brown, Green,
Inverse, Gray, Green/Red, Default = Blue

SI Colors allows you to select which color palette you would like to use for the Side Imaging® and Down Imaging™ display.



Cancel Navigation

(only when Navigating)

Settings: Press the RIGHT Cursor key and follow screen instructions.

Cancel Navigation discards the current route and exits Navigation Mode. This menu option will only appear when you are currently navigating a route. This will not delete a previously-saved route.

Side View Frequency

455kHz

Side View Frequency

(Side Imaging® and Down Imaging™ Views only
[898c SI, 998c SI])

Settings: 800 kHz or 455 kHz; Default = 455 kHz

Side View Frequency allows you to select which frequency to apply to the Side Imaging® beams (800 kHz or 455 kHz).

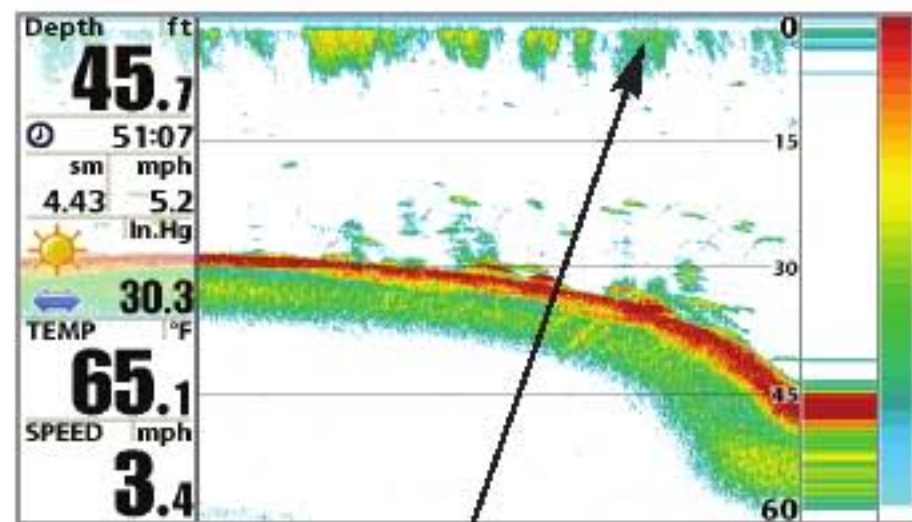
Surface Clutter

1

Surface Clutter

Settings: Low = 1 to High = 10; Default = 5

Surface Clutter adjusts the filter that removes surface clutter noise caused by algae and aeration. The lower the setting, the less surface clutter will be displayed.



Surface Clutter

SwitchFire

Clear Mode

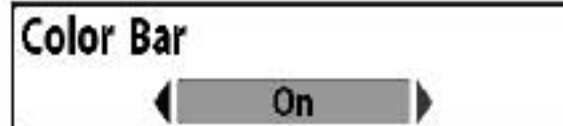
SwitchFire™

Settings: Clear Mode, Max Mode; Default = Clear Mode

SwitchFire™ controls how the sonar returns are displayed in the Sonar Views.

Choose **Max Mode** to see only raw sonar returns on the display. When Max Mode is selected, you will see the maximum sonar information available within the transducer beam, so more fish arches and better jig tracking are shown.

Choose **Clear Mode** to see less clutter and more fish size accuracy on the display. When Clear Mode is selected, the clutter is filtered, and sonar returns are interpreted to provide more details about the objects within the transducer beam, regardless of their location. In other words, a large arch on the display means a large fish has been detected.



Color Bar

Settings: Off, On, Default = On

Color Bar allows you to display or suppress the display of the color bar shown in the full screen Sonar View.



Temperature Graph

(Sonar View only, with Temperature input)

Settings: Off, On, Default = On

Temperature Graph allows you to display or suppress a water temperature graph over the main Sonar View to show temperature changes correlated to recent sonar history.



Down Imaging Beam Width

(Advanced)

Settings: Narrow, Medium, Wide; Default = Wide

Down Imaging Beam Width controls the width of the beam (side to side) for the Down Imaging™ View and sets the amount of information shown on the display.

To see only the data directly under your boat, select Narrow. Medium reveals more information, while Wide displays the maximum information available from the Down Imaging™ beam width.

Select Readouts



Select Readouts

(Advanced)

Settings: Various, Default = Off

Select Readouts sets the information to display in each of the 5 fixed-position data windows arranged around the left and bottom edges of the Sonar View screen. To leave the data window blank, select Off. See **Views** to change the Select Readouts.

Select Readouts
Readout 1 Temperature
Readout 2 Speed
Readout 3 Triplog
Readout 4 Off
Readout 5 Off

Select Readouts

Data windows can display readouts from supported accessories such as GPS Receiver or Temp/Speed. Each data window can be empty or contain one of the following information categories:

- Course
- Depth
- Off
- Position
- Aux. Temperature
- Speed
- Time
- Time + Date
- Triplog
- Voltage
- Temperature
- Water Speed

Sonar, Side Imaging[®], and Down Imaging[™] Views: All 5 readouts can be customized.

During navigation: Readout 1 can be customized, and Readouts 2 - 5 are fixed as follows: Readout 2 (Heading), Readout 3 (Bearing), Readout 4 (Split: Cross Track Error (XTE) and Distance To Go (DTG)), and Readout 5 (Split: Time To Go (TTG) and Speed).

Chart Views: Readouts 1, 3, and 4 can be customized. Readout 2 (Heading) and Readout 5 (Speed) are fixed and cannot be customized.

During navigation: Readout 1 can be customized, and Readouts 2 - 5 are fixed as follows: Readout 2 (Heading), Readout 3 (Bearing), Readout 4 (Split: Cross Track Error (XTE) and Distance To Go (DTG)), and Readout 5 (Split: Time To Go (TTG) and Speed).

Bird's Eye View: Readout 1 - 4 are fixed as follows: Depth, Heading, Position (Lat/Lon), and Speed.

During navigation: There are two columns of fixed readouts. The first column shows Depth, Time To Go (TTG), Position (Lat/Lon), and Speed. The second column shows Cross Track Error (XTE), Heading, Bearing, and Distance To Go (DTG).

***NOTE:** The availability of the digital readout information corresponds with the view selected, the accessory attached, and whether or not you are navigating.*

