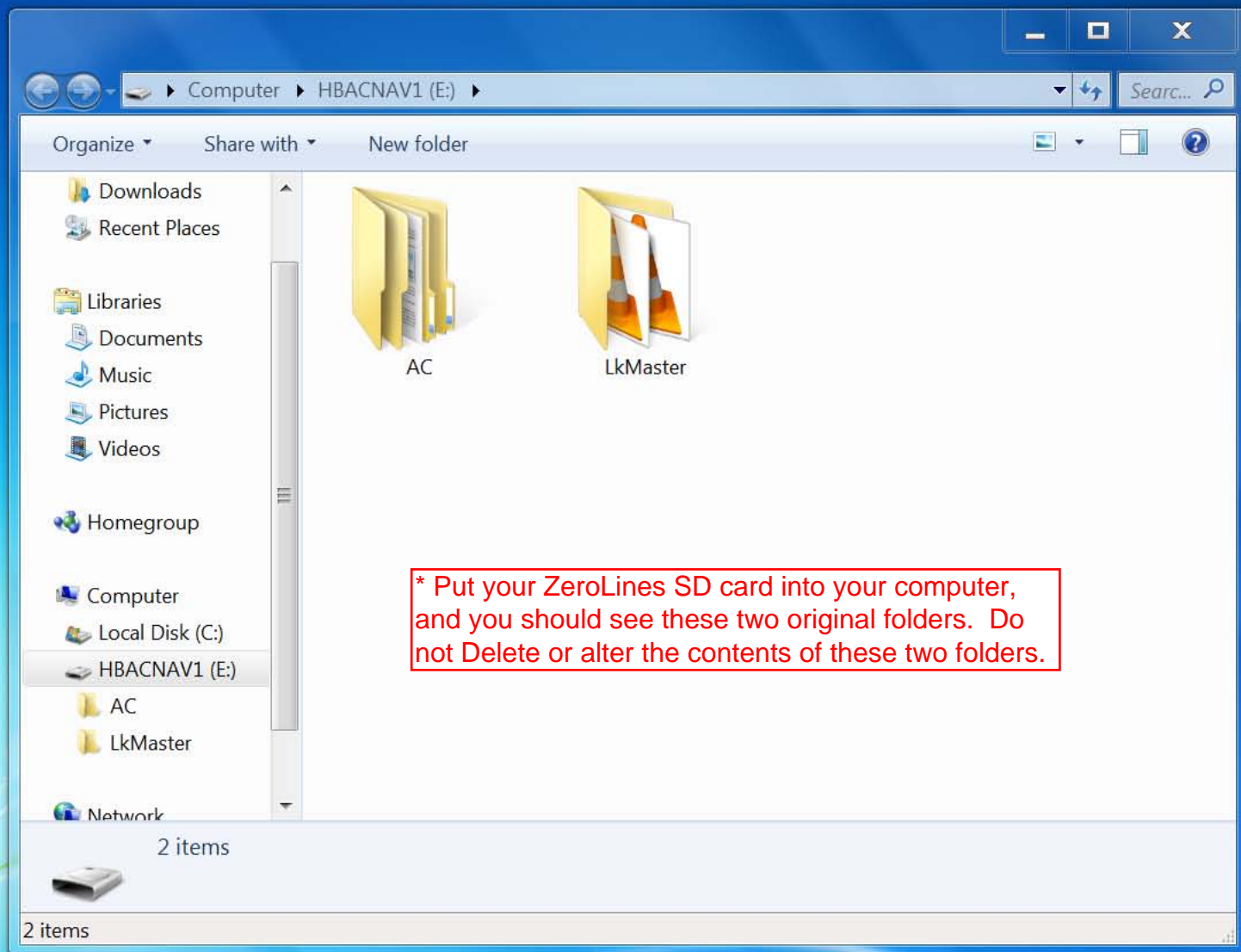




Recycle Bin



desktop



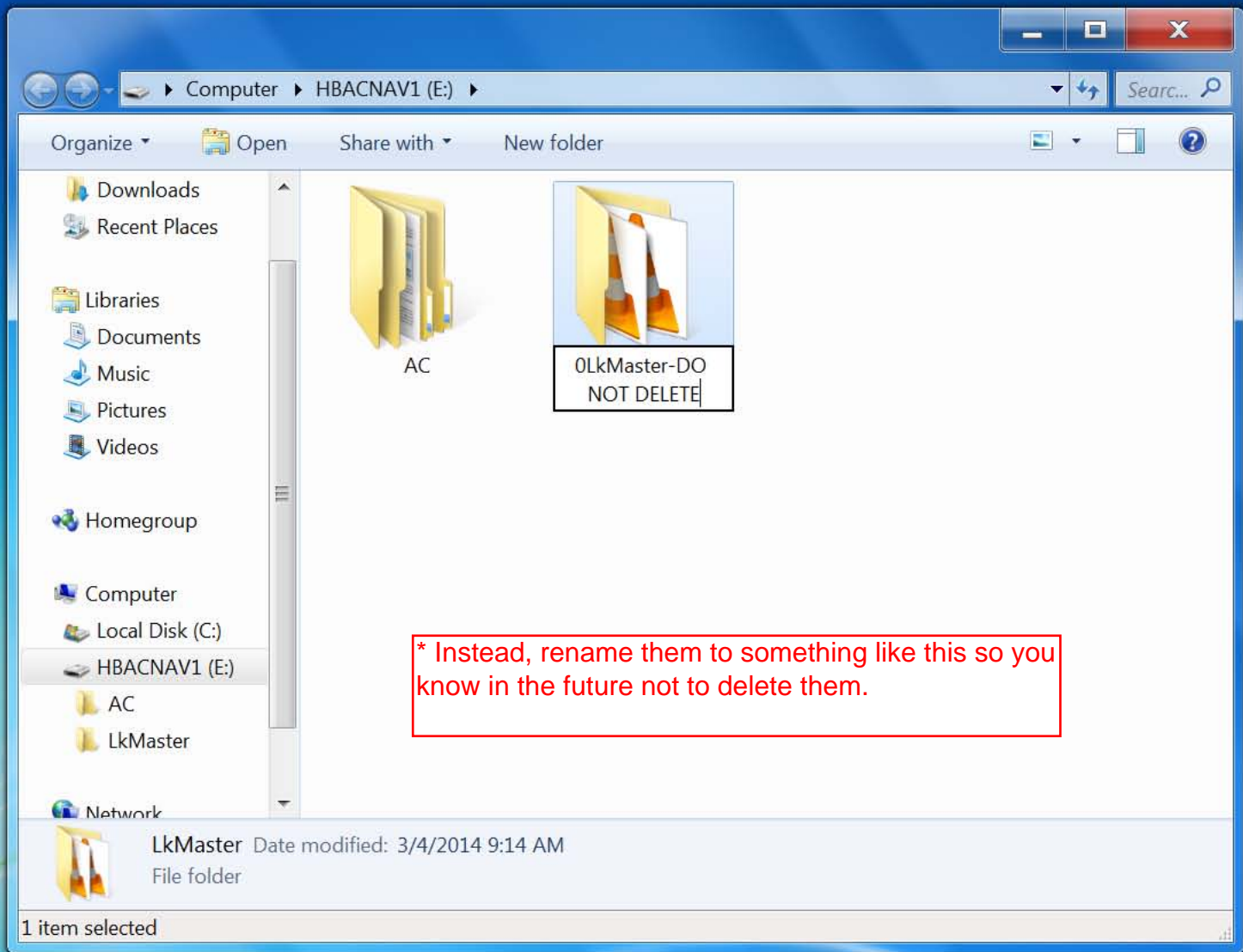
* Put your ZeroLines SD card into your computer, and you should see these two original folders. Do not Delete or alter the contents of these two folders.



Recycle Bin



desktop

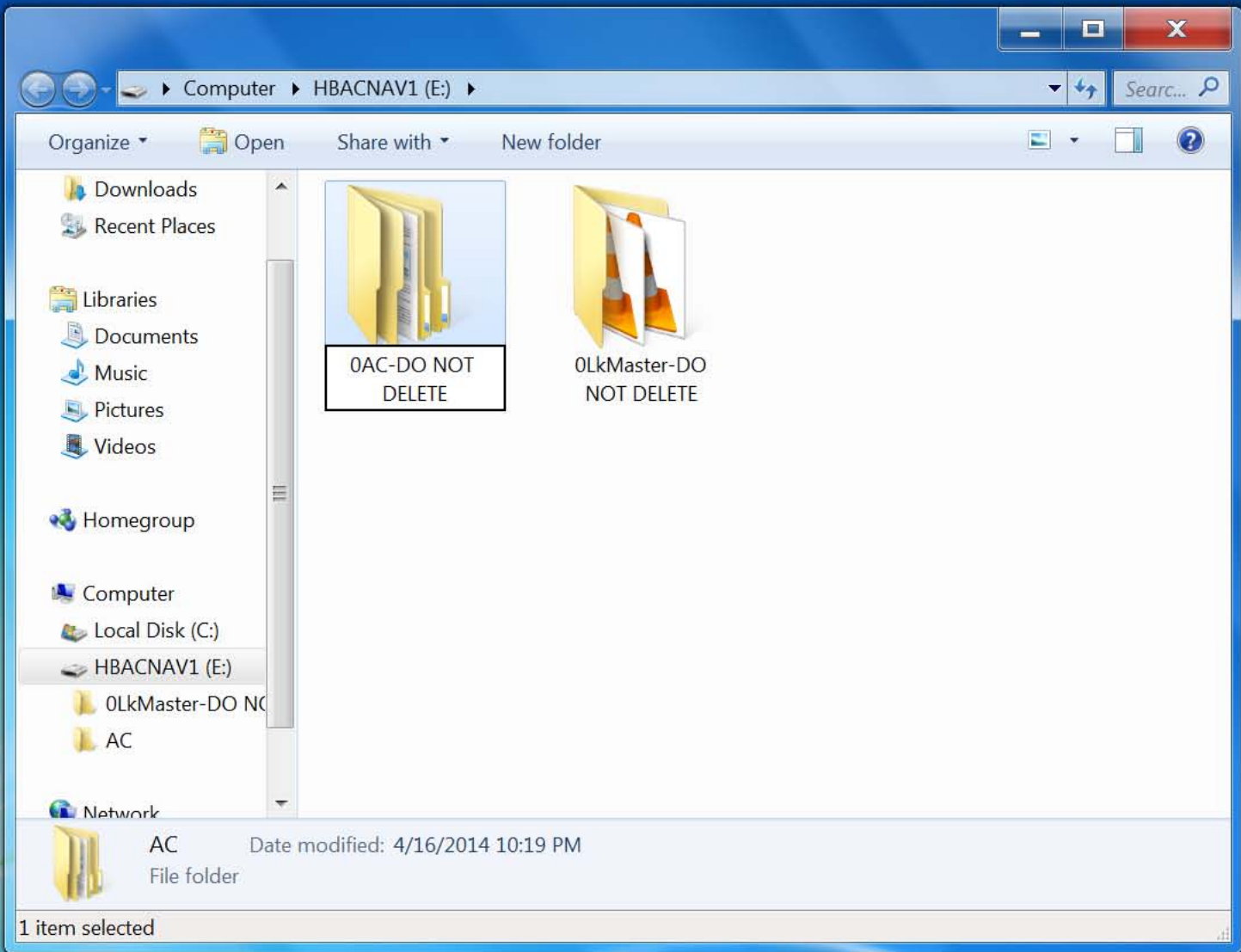


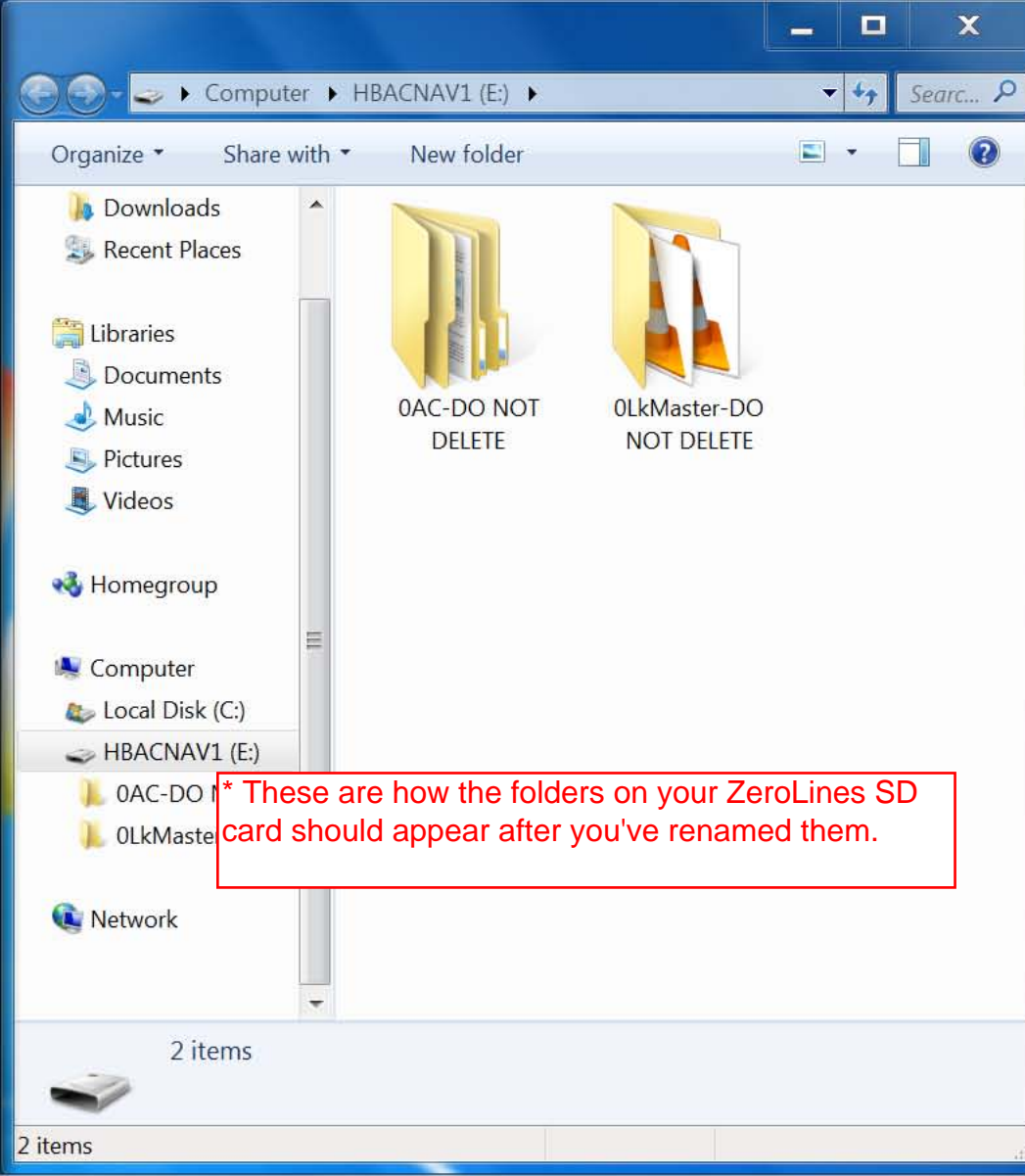
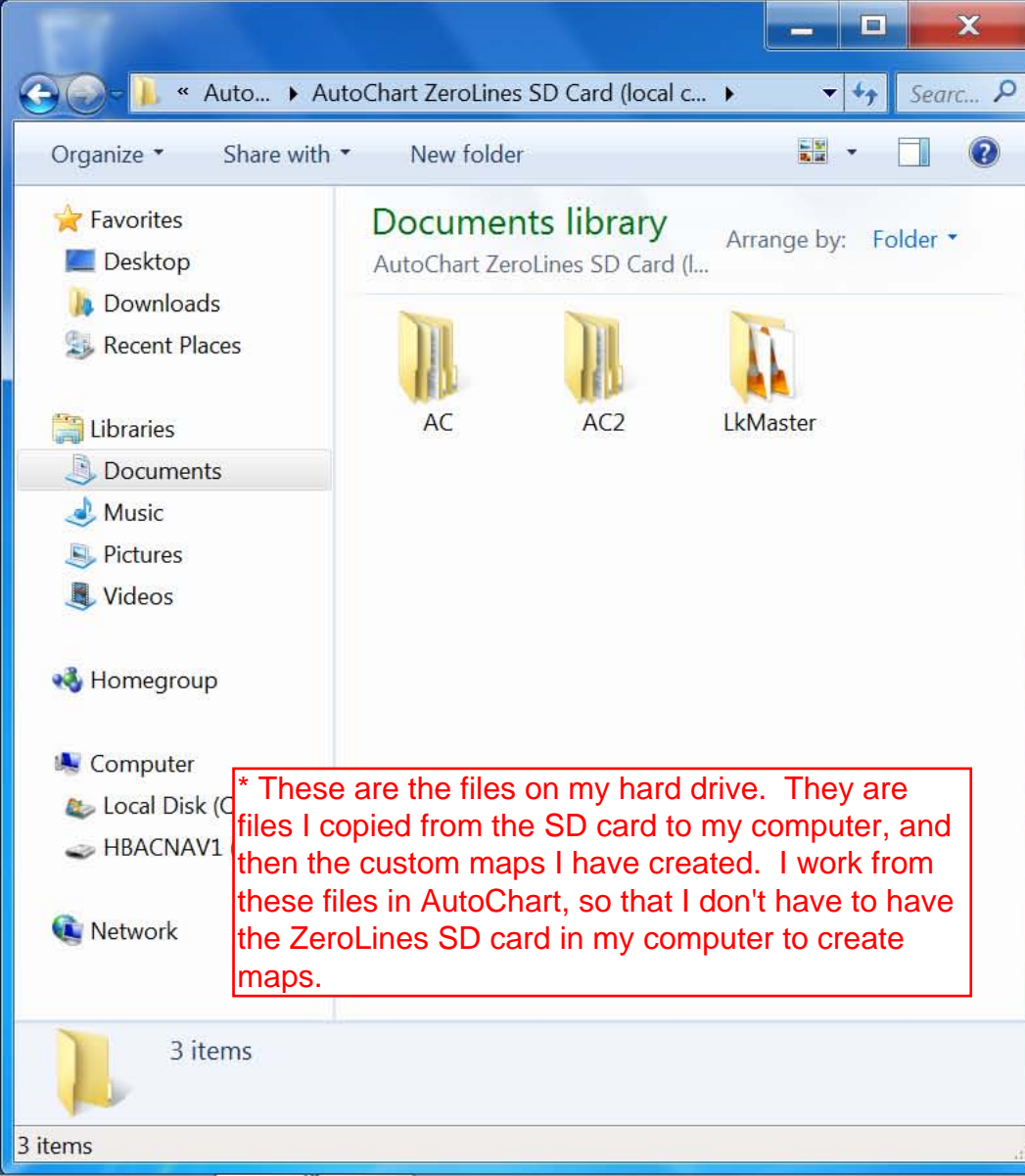


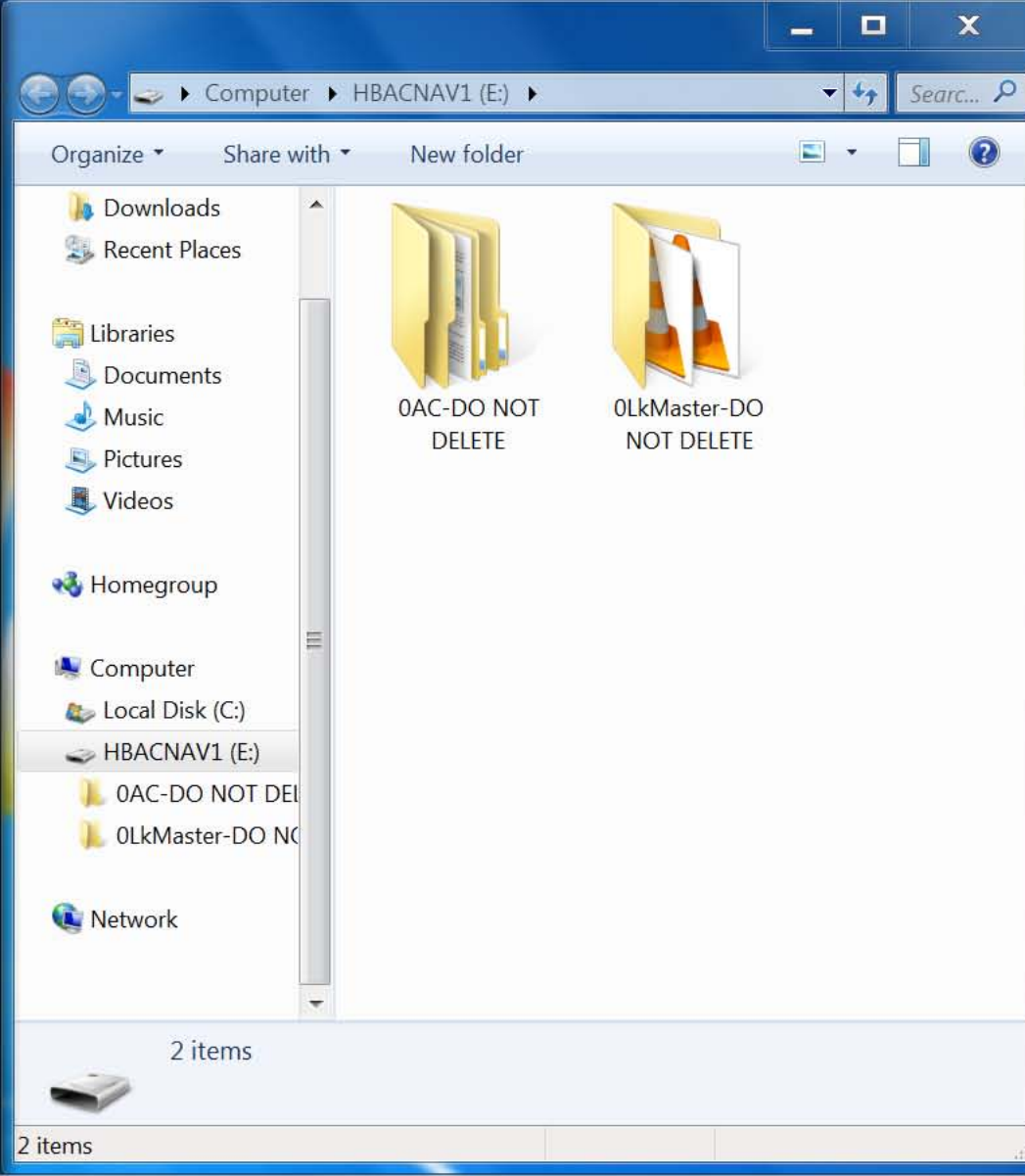
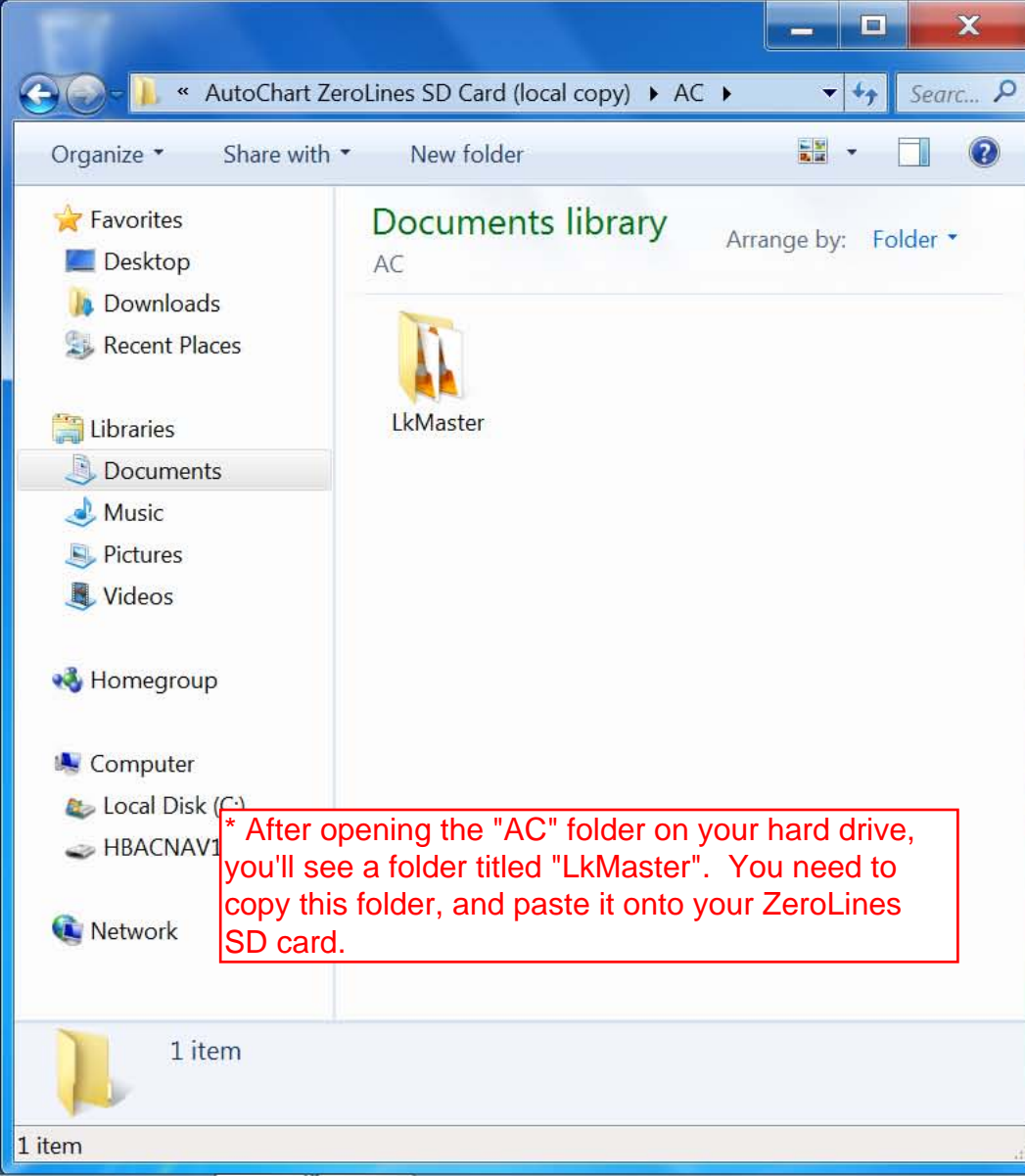
Recycle Bin

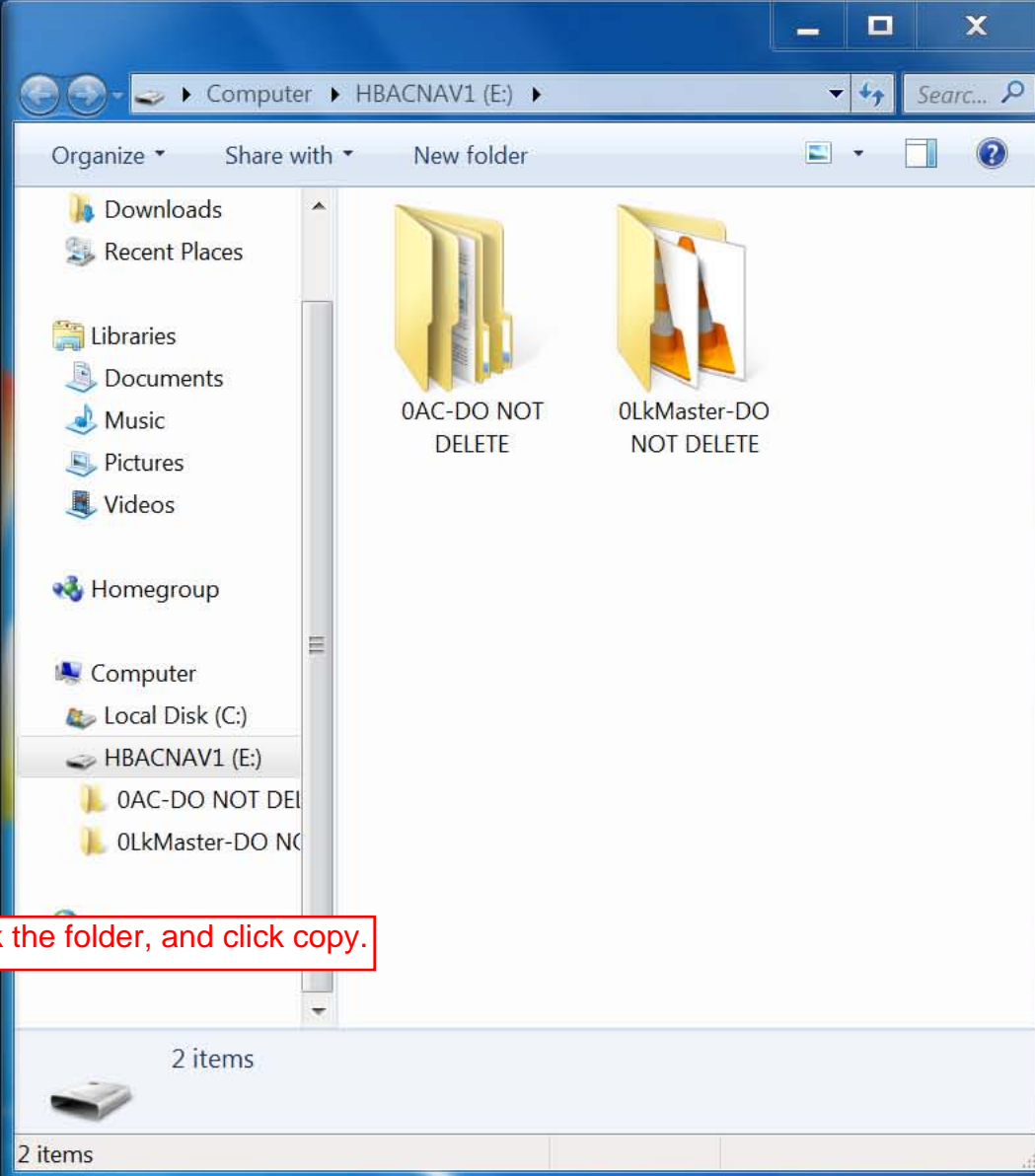
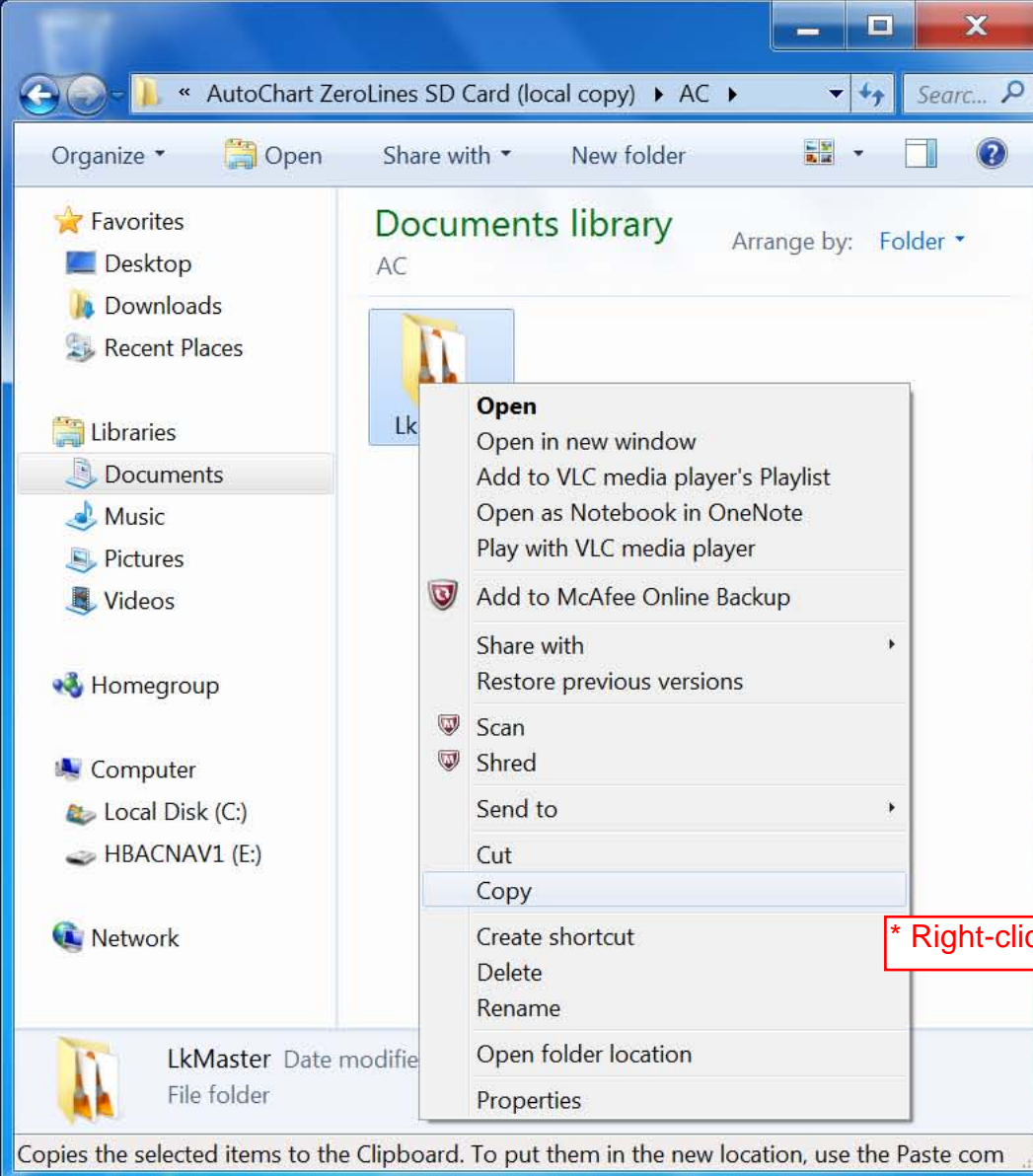


desktop

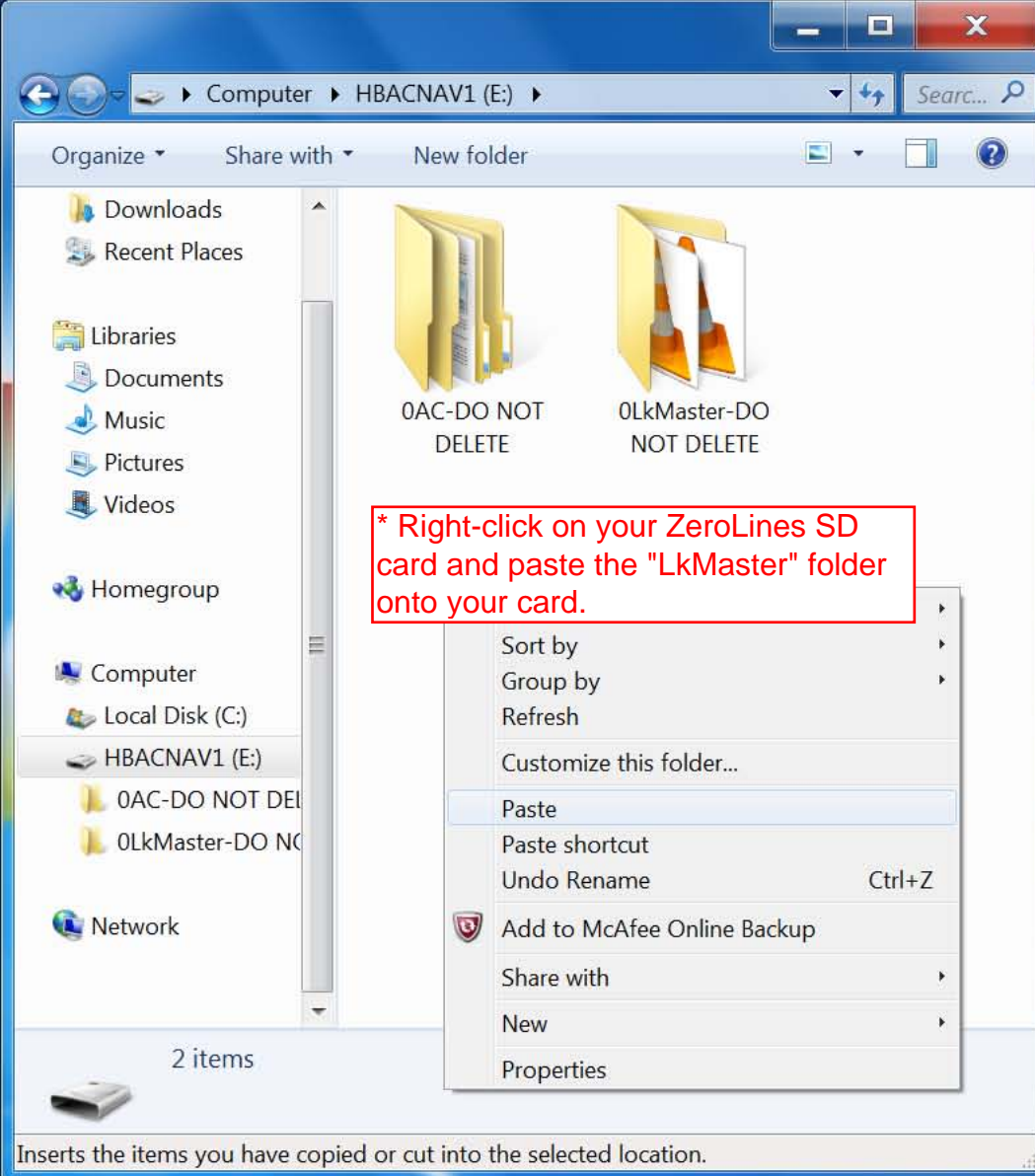
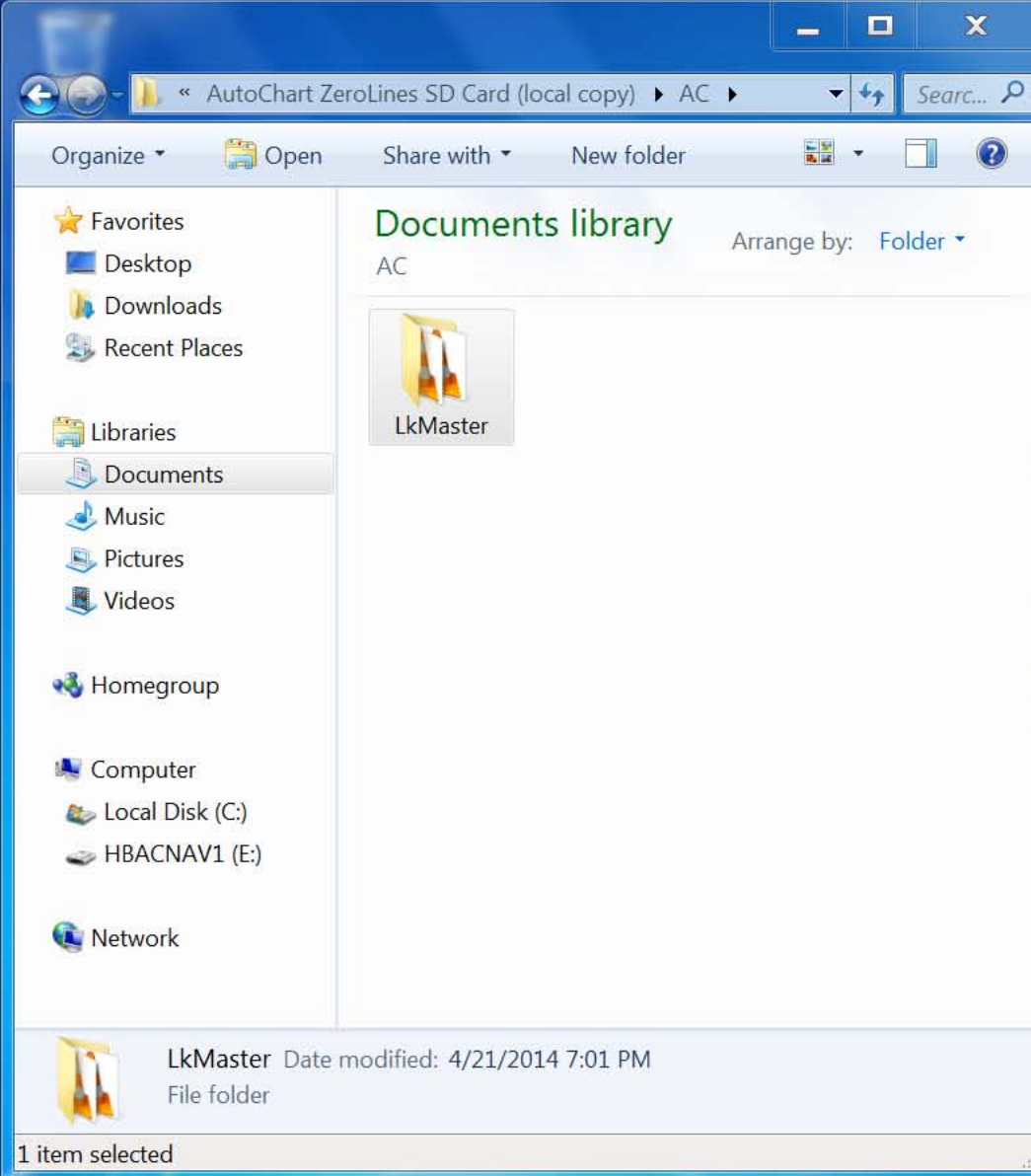


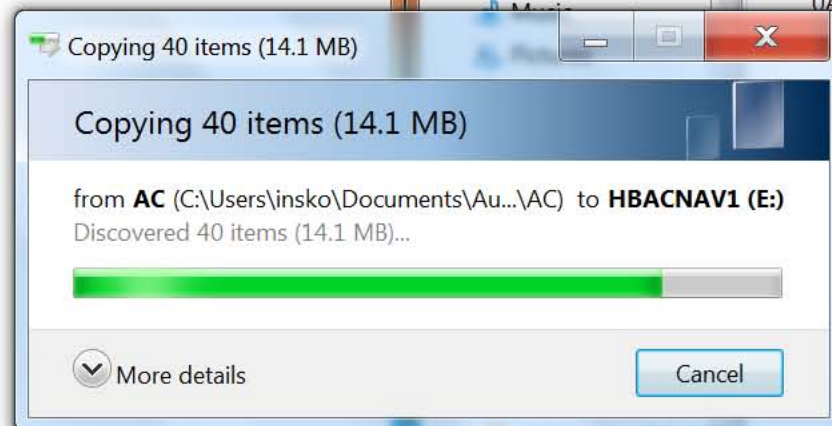
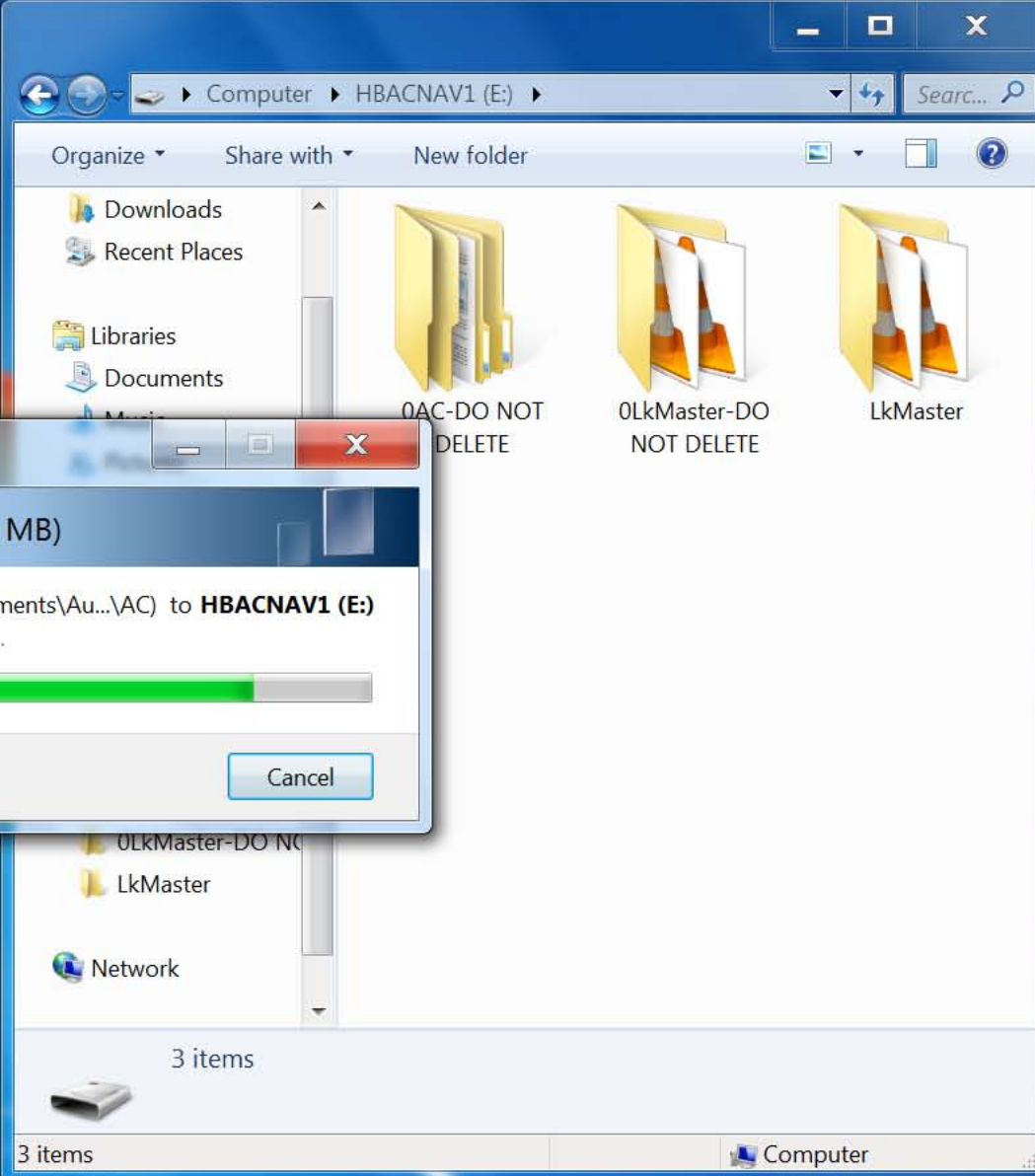
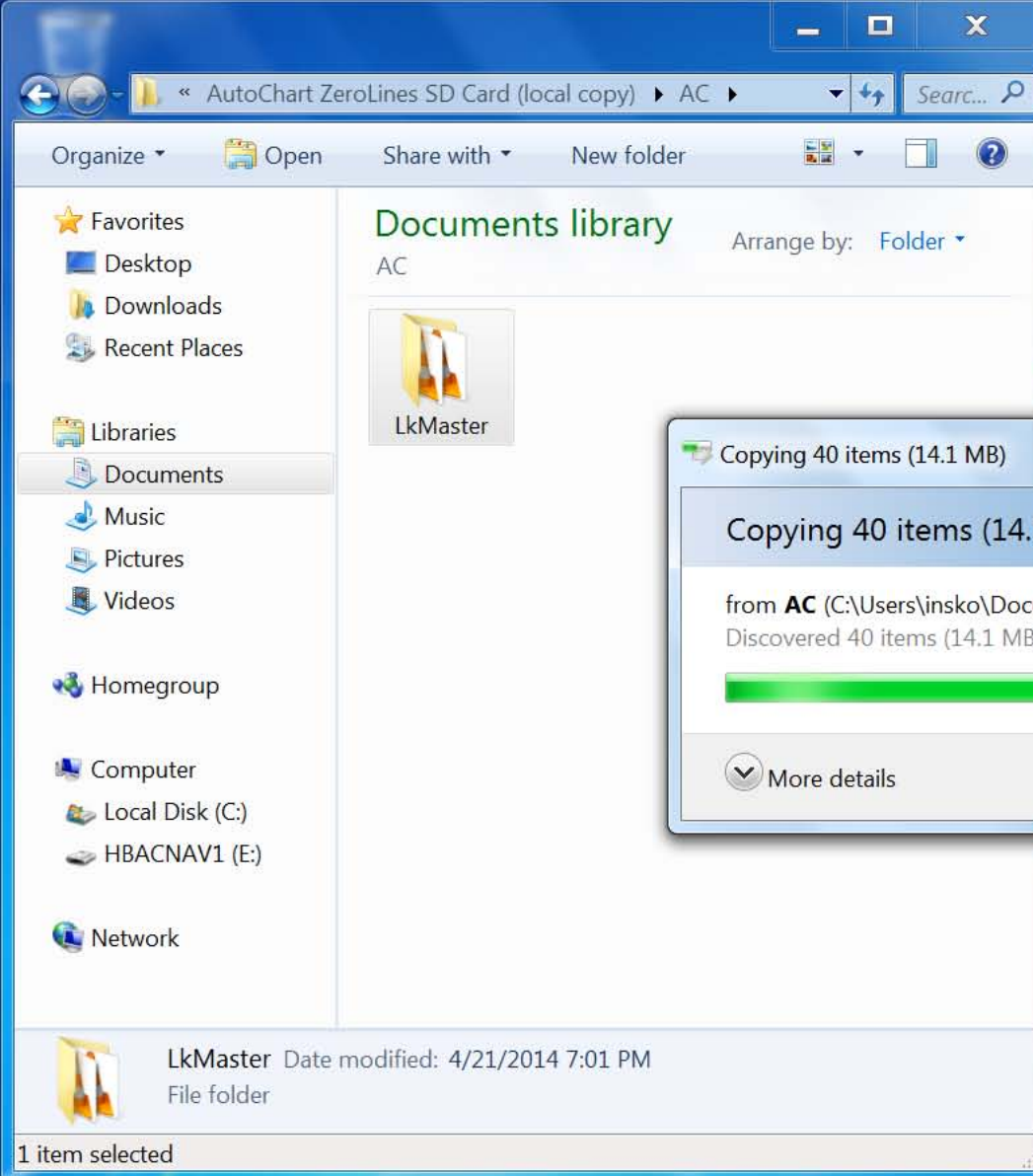


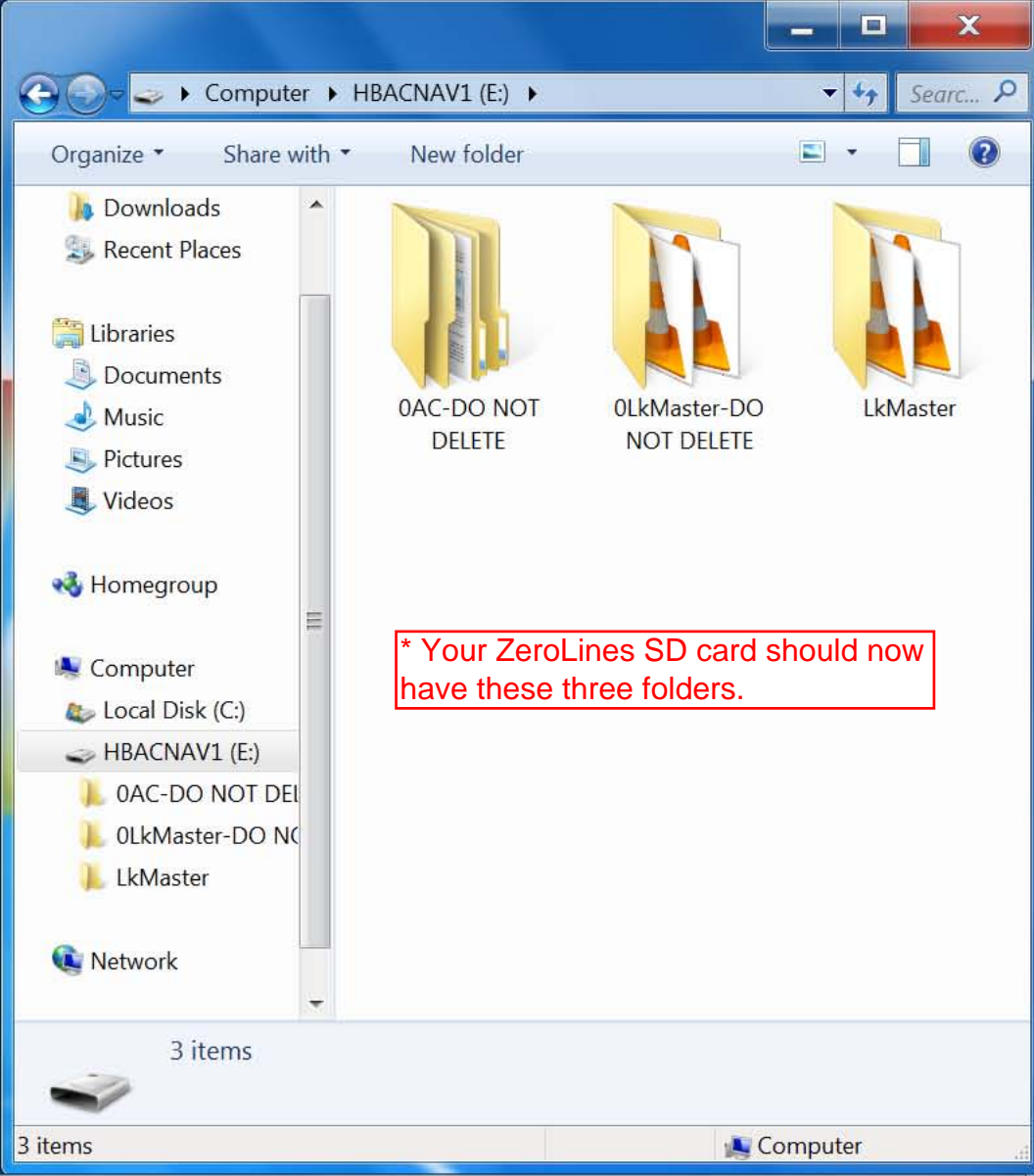
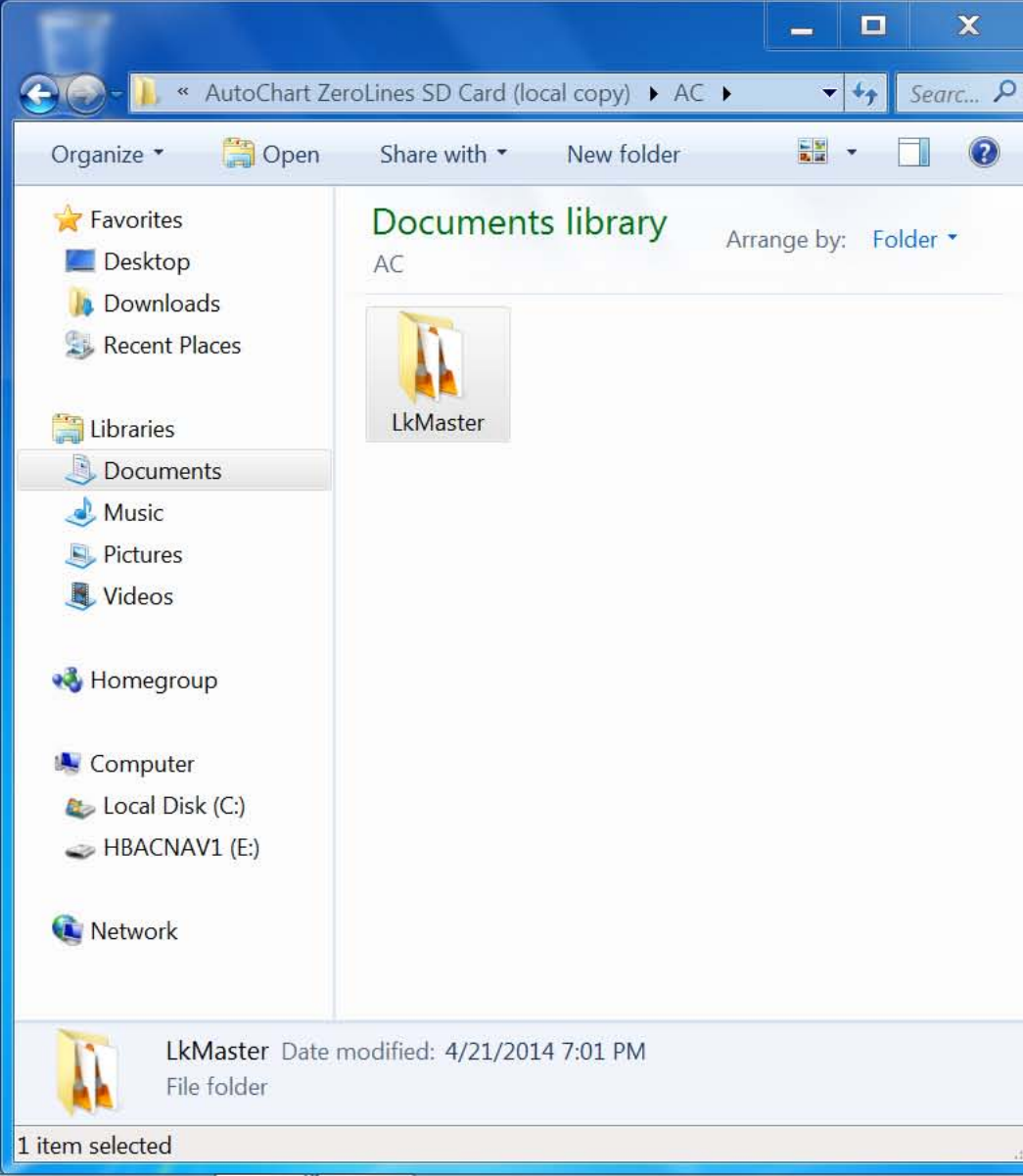




* Right-click the folder, and click copy.







244^{ft}

No Chart

500ft



* Turn on your unit and page to the
Navigation/GPS page.

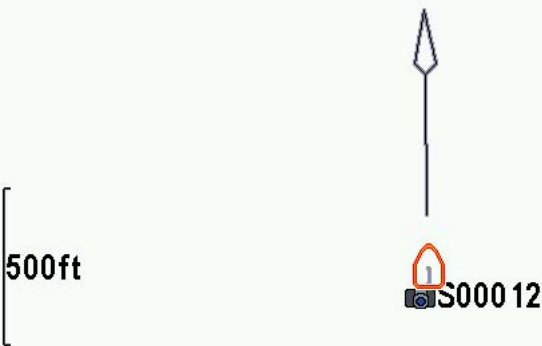
3.4^{mph}

062^{°t}

313^{ft}

Simulation

Loading Charts



* Put in your ZeroLines SD card and you should see it change from 'no chart' to 'loading charts' at the upper right corner.

5.6^{mph}

359^{°t}

348^{ft}

Simulation

500ft

* If you did everything correctly, you should be able to arrow to the area of your map, zoom in, and see your custom lakemaster map appear as it did in your AutoCharts program.

5.6^{mph}

359^{°t}

379^{ft}

200ft

* You should be able to utilize all the features you would normally be able to use with any Lakemaster map, such as depth highlight as shown here.

5.6^{mph}

359^{°t}

369 ft

