

Water Depth from Trackplots

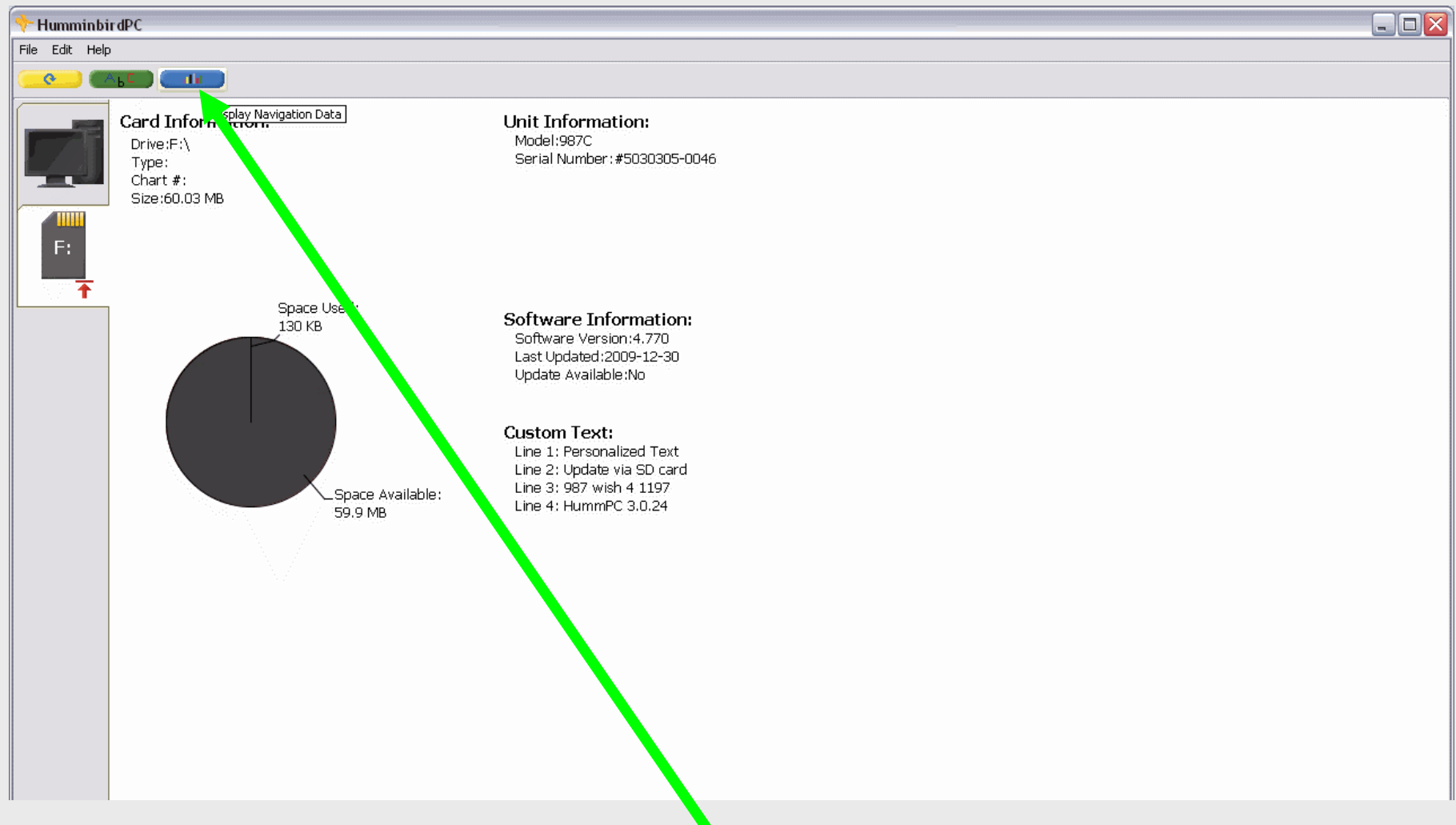
Water depth can be viewed from Tracks (Trackplots) taken from a Humminbird unit but only under very specific conditions:

- Before starting: the Current Track must be cleared first before starting the Track that you want the water depths from. If you do not do this there may be a large number of trackpoints that show 0 (zero) as their water depth.**
- After the Track has been made it must be Saved before powering the unit off.**
- The water depths may only be viewed directly from the SD card and not from downloading the Tracks to HumminbirdPC. This is a known condition with HumminbirdPC that may or may not be corrected in later versions (last checked with version 3.1.8).**

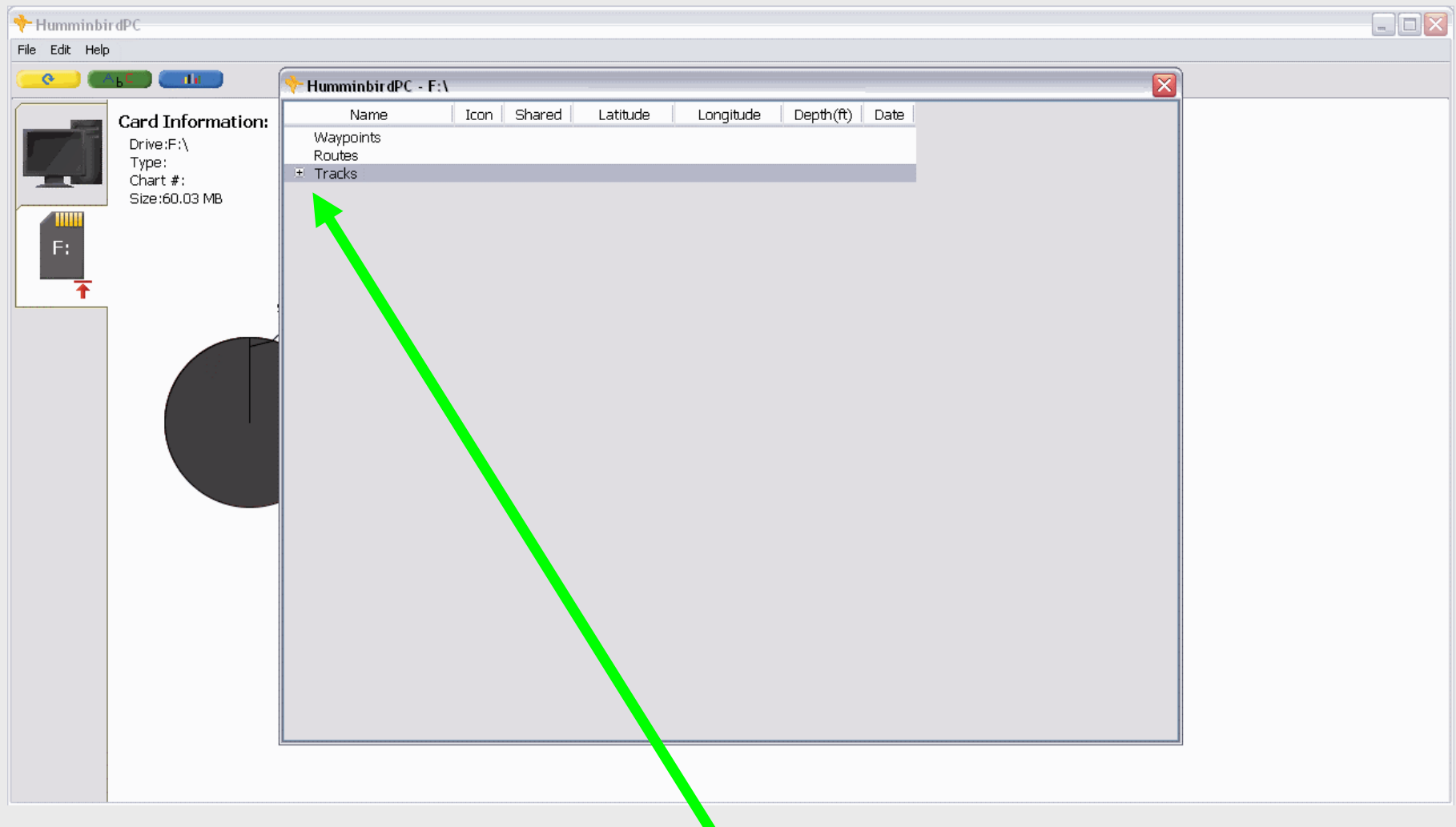
Start by making your Track according to the first two bullet points above (clear the current Track, when you are done save the current track). Install an SD card into your unit and perform an Export All Nav Data (found under the Nav menu tab) to get a copy of the Track on the SD card.



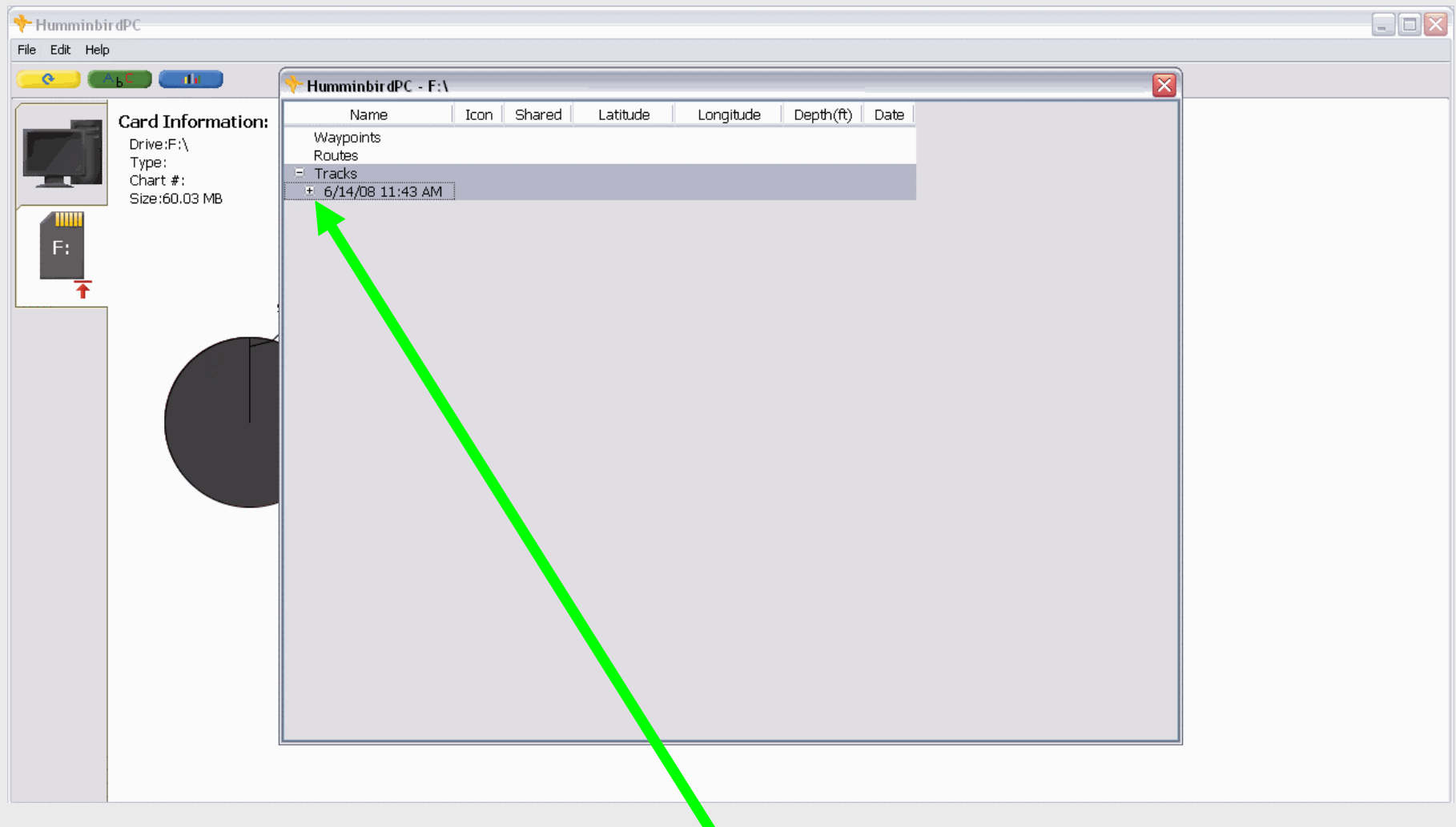
Install the SD card into your computer and start HumminbirdPC. Once HumminbirdPC is running you should see something like shown above. Use the left mouse button to select the SD card icon (shown as drive F above).



You should now be looking at something like shown above. Use the left mouse button to select the Display Navigation Data button (this is the blue button with multiple colored vertical bars on it).



Use the left mouse button to select the “+” symbol next to where the new window that opened shows Tracks.



If you have multiple Tracks saved, they will all be listed here. In this demo I have saved only one Track. Use the left mouse button to select the “+” symbol next to the Track that you want to look at the water depth data from.

HumminbirdPC

File Edit Help

Card Information:
 Drive:F:\
 Type:
 Chart #:
 Size:60.03 MB

F:

HumminbirdPC - F:\

Name	Icon	Shared	Latitude	Longitude	Depth(ft)	Date
6/14/08 11:43 AM						
			N48°21.050'	W092°03.294'	0.0	
			N48°21.049'	W092°03.294'	61.98	
			N48°21.047'	W092°03.294'	60.83	
			N48°21.046'	W092°03.294'	60.6	
			N48°21.045'	W092°03.294'	59.42	
			N48°21.043'	W092°03.294'	59.51	
			N48°21.042'	W092°03.294'	57.22	
			N48°21.040'	W092°03.294'	56.4	
			N48°21.039'	W092°03.294'	55.02	
			N48°21.038'	W092°03.294'	54.36	
			N48°21.037'	W092°03.294'	51.84	
			N48°21.035'	W092°03.294'	50.36	
			N48°21.034'	W092°03.294'	49.05	
			N48°21.033'	W092°03.294'	46.98	
			N48°21.031'	W092°03.294'	45.11	
			N48°21.030'	W092°03.294'	43.5	
			N48°21.029'	W092°03.294'	41.67	
			N48°21.027'	W092°03.294'	40.68	
			N48°21.026'	W092°03.294'	38.75	
			N48°21.024'	W092°03.294'	36.38	
			N48°21.023'	W092°03.294'	33.89	
			N48°21.022'	W092°03.294'	31.5	
			N48°21.020'	W092°03.294'	28.94	
			N48°21.019'	W092°03.294'	27.07	
			N48°21.018'	W092°03.294'	26.44	
			N48°21.016'	W092°03.294'	25.52	
			N48°21.015'	W092°03.294'	25.03	
			N48°21.014'	W092°03.294'	24.9	
			N48°21.012'	W092°03.294'	25.52	
			N48°21.011'	W092°03.294'	25.66	
			N48°21.010'	W092°03.294'	25.95	
			N48°21.008'	W092°03.294'	26.41	
			N48°21.007'	W092°03.294'	26.84	

The water depth data for each trackpoint should now be displayed. Due to the number of actual trackpoints in the Track, not all of them may be displayed on the computer screen at one time so you may have to use the scroll bar on the right side of this window to view all of the water depths for each trackpoint.