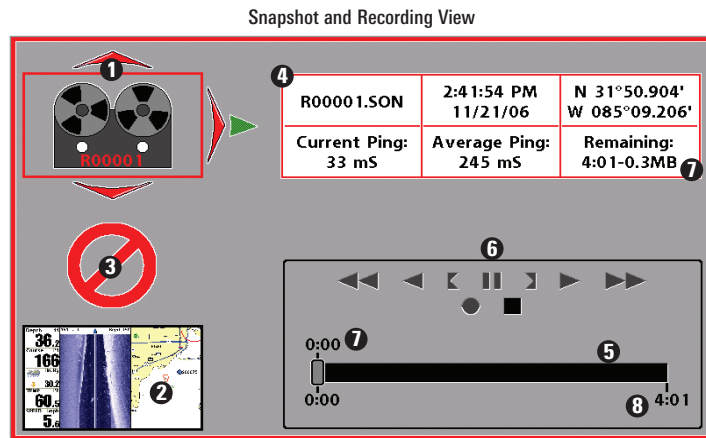


Snapshot and Recording View

Snapshot and Recording View displays and allows you to view both screen snapshot thumbnails and recording icons captured to an optional-purchase MMC/SD card installed in your unit. In addition, when you are in the Snapshot and Recording View, Start Recording, Stop Recording, Delete Image, Delete All Images, Delete Recording, Delete All Recordings, Pings Per Second, Playback Speed and Stop Playback are added to the X-Press™ menu.

The Snapshot and Recording View displays up to three screen snapshot thumbnails or recording icons on the screen at a time; you may have to scroll using the 4-WAY Cursor keys to see the whole list of thumbnails and/or icons in this view. The selected thumbnail or icon will be highlighted with arrows.

NOTE: The speed of the screen capture or of the recording depends on the type of card you use; in general, SD cards capture the screen faster than MMC cards do.



- 1 Recording icon
- 2 Snapshot thumbnail
- 3 Unavailable icon
- 4 Information box
- 5 Amount of recording left to play
- 6 Recording mode icons
- 7 Amount of recording that has been played
- 8 Amount of space used for this recording

NOTE: For snapshots and recordings, the indicator bar has several states: during recording, the amount of space remaining on the MMC/SD card is indicated on the status bar. During playback, the amount of time/memory remaining to play is indicated on the status bar. When a snapshot thumbnail is highlighted, the amount of room remaining on the MMC/SD card is indicated.

Screen Snapshot: When Screen Snapshot is enabled (from the Accessories menu tab), pressing the MARK key creates a saved screen capture (when you have an optional-purchase MMC/SD card installed). Once you have created a screen capture, a screen capture thumbnail is added to the Snapshot and Recording View, and is available to view at a later date. See the full-sized image by highlighting a thumbnail (using the Up or Down 4-Way Cursor keys), then using the Right 4-Way Cursor key to view the full image. A border around the full-size screen snapshot indicates that it is just a screen snapshot, not a “live” view. You can delete the selected image, or all images, by selecting a thumbnail and using Delete Image, or using Delete All Images from the Snapshot and Recording X-Press™ menu.

Working with screen snapshots is a four-step process:

1. Enabling Screen Snapshot from the Accessories Menu.
2. Making a Screen Snapshot using the MARK key.
3. Viewing a Screen Snapshot using the Snapshot and Recording View.
4. Deleting a Screen Snapshot using the Snapshot and Recording X-Press™ menu.

For more information, see *Accessories Menu Tab: Using Screen Snapshot* and *Snapshot and Recording X-Press™ Menu*.

When you start a screen snapshot, you will see a message that a waypoint has been created at the point where your cursor is on the screen, and the screen will freeze while the snapshot is being saved to the MMC/SD card. A status dialog box will appear that shows the progress of the save as a percentage, and that displays the numbered file name assigned to the .BMP file that is being created. Snapshot filenames begin with the letter "S". For more information, see *Accessories Menu Tab: Using Screen Snapshot procedure* and *Snapshot and Recording X-Press™ Menu*.

Recording and Playback: From the Snapshot and Recording View, you can use the X-Press™ menu to start and stop recording, and to change the pings per second (which alters the detail level of the recording). Once you are recording already, playing back a recording and screen snapshot viewing are not allowed, and the only Sonar Recording menu choices available in the X-Press™ menu are Stop Recording and Pings Per Second. Use the 4-WAY Cursor keys from the Snapshot and Recording View to start playback of a specific recording icon. You can then cycle through all the views using the VIEW key to see what those views looked like during the recorded time period. You can also use the X-Press™ menu to change playback speed, stop playback, and delete recording icons.

Working with sonar recordings is a six-step process:

1. Displaying the Snapshot and Recording View.
2. Starting a sonar recording using the Snapshot and Recording X-Press™ menu.
3. Changing the maximum ping rate for the recording using the Snapshot and Recording X-Press™ menu (optional).

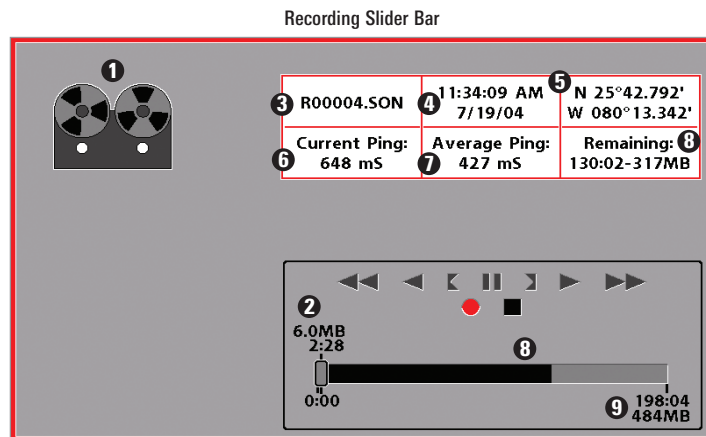
4. Stopping a recording using the Snapshot and Recording X-Press™ menu.
5. Playing back a recording, using the Snapshot and Recording View and the 4-Way Cursor keys, and changing the playback speed using the Snapshot and Recording X-Press™ menu.
6. Deleting a recording using the Snapshot and Recording X-Press™ menu.

For more information, see *Snapshot and Recording X-Press™ Menu*.

When you start a sonar recording, you will see a message that a waypoint has been created at your current location. During recording, playing back a recording and screen snapshot viewing are not allowed. An information box displays a variety of information including the numbered file name assigned to the .SON file that is being created. The slider bar at the bottom of the screen shows the progress of the recording as well as how much space is remaining on the MMC/SD card.

NOTE: The waypoints that are created by a recording have the same name as the file and use a custom waypoint icon. Recording filenames begin with the letter "R".

For more information, see *Snapshot and Recording X-Press™ Menu*.



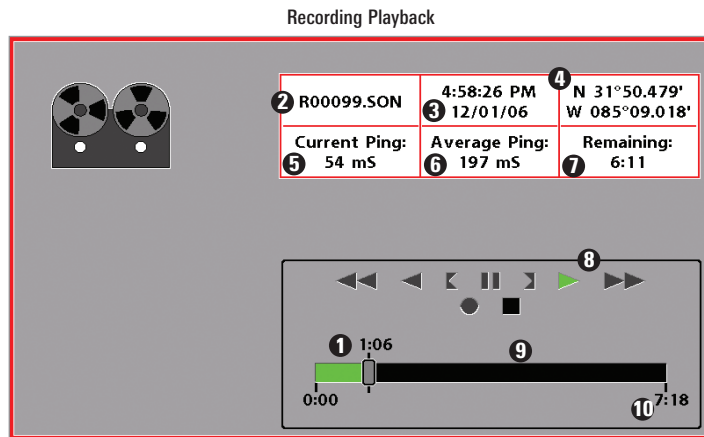
- | | |
|--|--|
| <ol style="list-style-type: none"> 1 Recording Indicator 2 Amount of space and time used by this recording 3 Name of recording 4 Time and Date recording was started 5 Position where recording was started | <ol style="list-style-type: none"> 6 Current Ping Rate 7 Average Ping Rate 8 Amount of space remaining on card 9 Total amount of space on card |
|--|--|

Highlighting a recording: You can scroll through the whole list of recording icons available in the Snapshot and Recording View using the 4-WAY Cursor keys. The highlighted icon will be surrounded by arrows, and a green play triangle will appear to its right.

Playing back a recording: Highlight a recording icon (using the Up or Down 4-Way Cursor keys), then use the Right 4-Way Cursor key to start playback. During playback, all active navigation is cancelled, all other thumbnails and icons will disappear, and a "Playback" message box similar to the Simulation message will be displayed periodically. When playback begins, the view is automatically switched to the primary Sonar View for your model, and no live sonar data will be displayed; only recorded sonar and GPS data will be shown, and the Snapshot and Recording View will display the playback status. You can change the speed, skip to the beginning or end of playback, and even reverse playback, using the Playback Speed X-Press™ menu item, and stop the playback using the Stop Playback X-Press™ menu item; these items are added to the X-Press™ menus in all views during playback. In the Snapshot and Recording View only, playback speed can also be changed using the Left and Right 4-Way Cursor keys. Playback is paused when the sonar cursor is active and resumes playing when the cursor is removed. Playback is automatically paused when the end of the recording is reached.

NOTE: Sonar chart speed is increased during Fast Forward and reversed during Rewind. This may reduce the quality of the sonar image, since at higher speeds, not every sonar return can be processed and displayed.

NOTE: Navigation is not affected by the Sonar Recording feature, but any active navigation is cancelled when playback begins or ends.



- 1 Amount of time already played
- 2 Name of recording
- 3 Time and Date recording started
- 4 Position when recording started
- 5 Current playback ping rate
- 6 Average ping rate
- 7 Amount of time remaining to play
- 8 Playback speed icons
- 9 Amount of time remaining to play
- 10 Overall length of recording

You can delete the highlighted recording, or all recordings, using Delete Recording or Delete All Recordings from the Snapshot and Recording X-Press™ menu.