

## CannonLink

The CannonLink is an accessory connects up to six Cannon Mag20 downrigger and one Cannon Speed-n-Temp gauge to any Humminbird Fishing Systems.

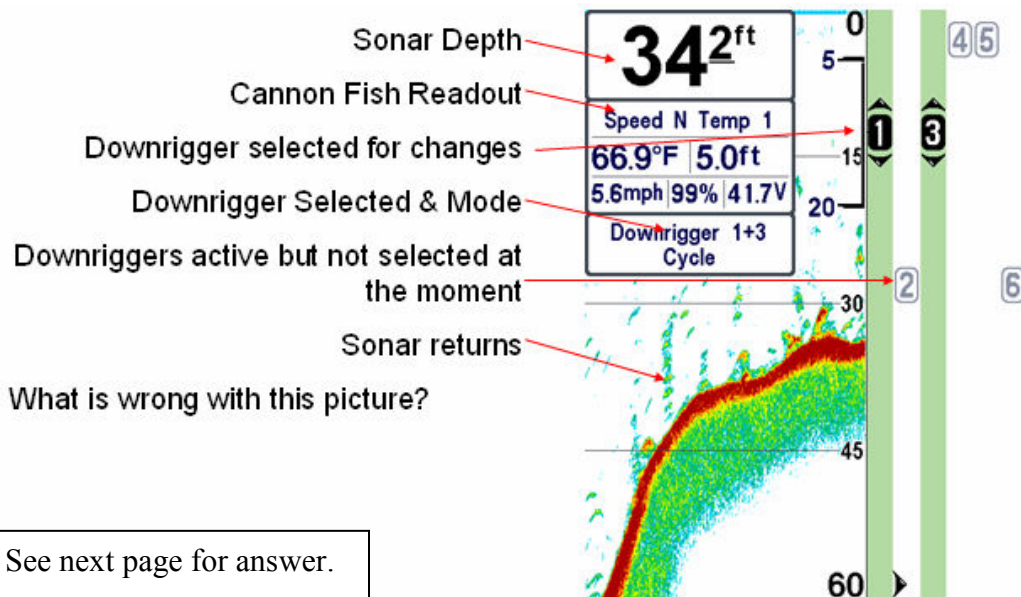


Three Modes are built in to the CannonLink- Manual, Cycle and BottomTrack. All of these modes are already built in to the downrigger. The communication between the CannonLink, Humminbird unit and the Downrigger are very much like asking the downrigger to do what it is designed to do. CannonLink is not giving the downrigger anymore abilities but is enable it to do what is designed to do.

Manual mode- You set the ball height and it stay there.

Cycle Mode- You set an upper limit and a lower limit with a time restraint and the downrigger will go between those two points all day.

BottomTrack Mode- You set a height off the bottom and the communication between the HB unit and the downrigger work to keep the ball at the proper height off the bottom.



## CannonLink cont.:

What is wrong with this picture? The Cannon Speed-n-Temp gauge Voltage was 41.7 V. That is coming out of a 9V battery.

This is a picture from point of sale mode, values are not real.

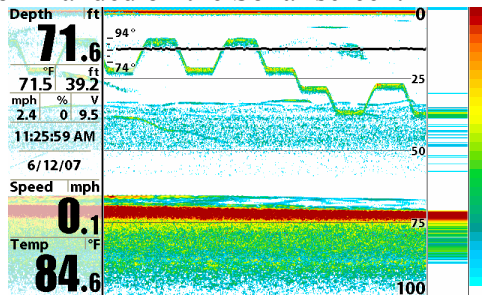
HB has three modes in most of our units:

Normal Mode- We send active send sonar pings out the transducer.

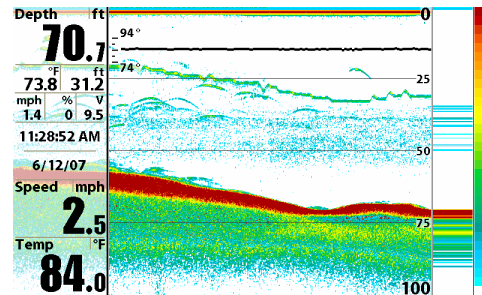
POS (point of sale)- This where the unit comes up and says no transducer present and start giving info box about why to buy. It is simulate all of the accessories attached.

Simulator- Press menu during the title screen and select simulator. This mode is use artificial sonar and GPS data but gives active accessory data.

The next two pictures are the using CannonLink to move the ball up and down as commanded on the Sonar screen.



Cycle mode with a change in the mode in middle of screen



Bottomtrack mode with 0' wave

This is just a very brief overview of CannonLink, if you would like more information on CannonLink please let me know.