






With the addition of the Waypoint Management software, the “Export All Nav Data” menu disappeared but was replaced with the ability to either export all Nav Data (waypoints, routes and tracks) as before or to select to only export those waypoints, routes and tracks that we want to export. This document deals with the exporting of all Nav Data.

Depth **59.7** ft
COG **270** °t
N 34.20034°
W 083.99450°



Speed **4.5** mph



Current Track

Waypoints, Routes, Tracks

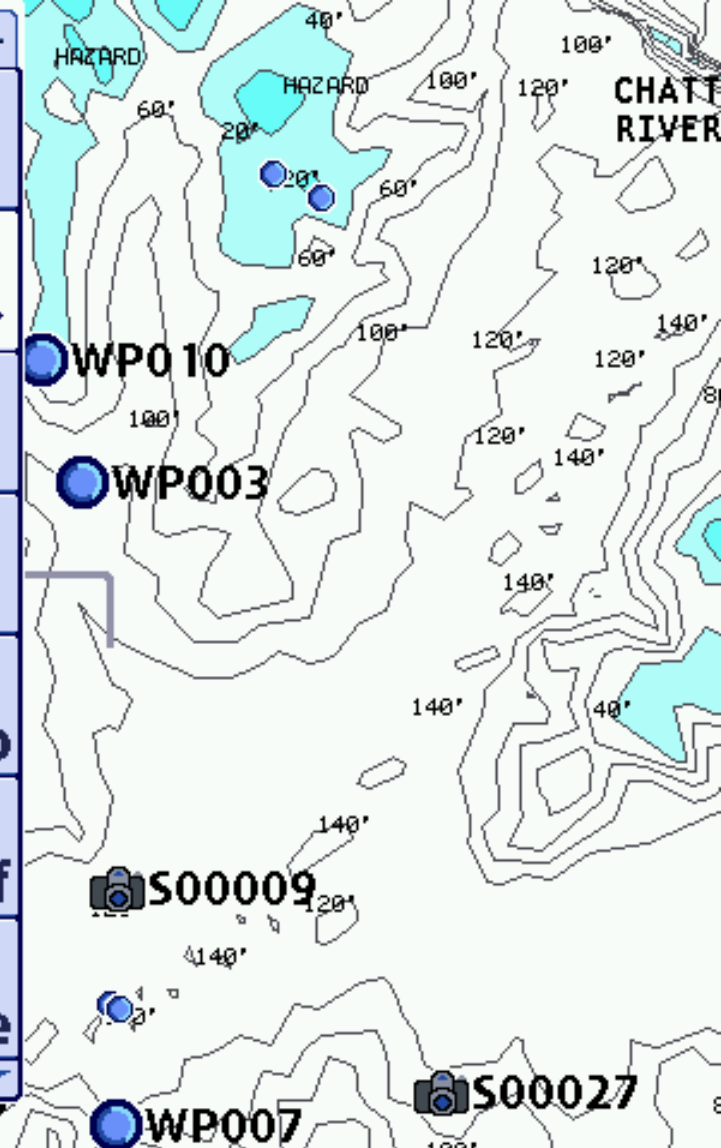
Waypoint Settings

Saved Tracks Defaults

Chart Orientation
North-Up

Casting Rings
Off

North Reference
True



The additional abilities of the Waypoint Management software necessitated additional menus. To export all Nav Data; press the MENU button twice to get to the main tabbed menu system. Use the Right and Down Arrow buttons to get to and select the “Waypoints, Routes, Tracks” menu.

Depth | ft
32.1
COG | °t
270
N 34.20034°
W 083.99474°

Speed | mph
4.5

Waypoints, Routes, Tracks

Sort By

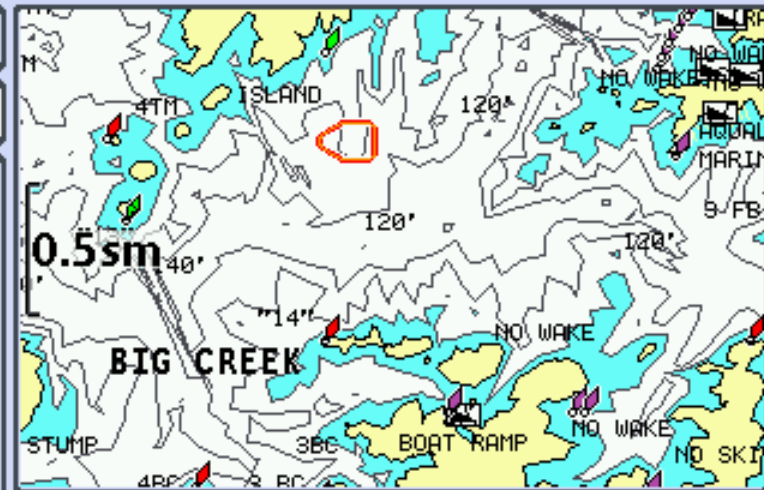
A to Z

Options ▸

- ▲
-  R00008
 -  S00004
 -  S00005
 -  S00006
 -  S00009
 -  S00025
 -  S00026
 -  S00027
 -  S00028
 -  S00029
- ▼

Home

Default Group: Home



Select An Item To
View Information

Once in the Waypoints, Routes, Tracks menu, use the Right Arrow to open the menu. You may have to than use the Up or Down Arrow buttons to move to the “Options” submenu. Once there; use the Right Arrow to open it up.

Depth | ft

21.3

COG | °t

270

N 34.20034°

W 083.99500°

Speed | mph

4.5

Waypoints, Routes, Tracks

Sort By A to Z

Options New

Select Multiple and ...

Select By

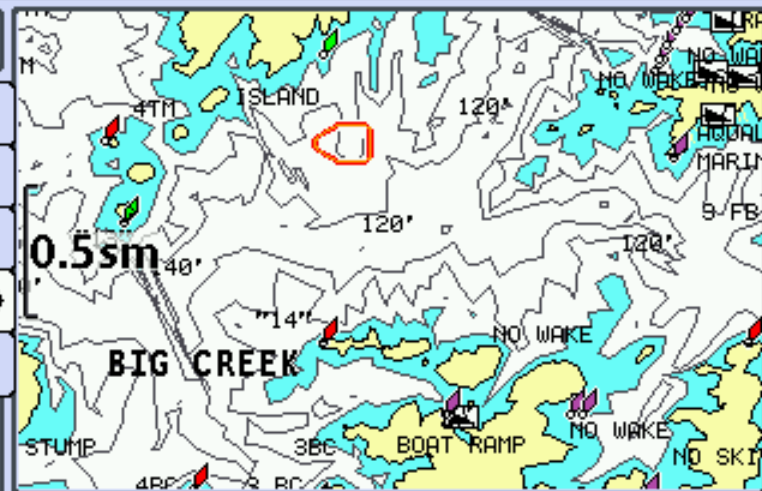
Select All and. . .

Set As Default



Home

Default Group: Home



Select An Item To
View Information

You will then need to use the Down Arrow to select the “Select All and...” submenu.

Depth | ft
21.7
COG | °t
270
N 34.20034°
W 083.99516°

Speed | mph
4.5

Waypoints, Routes, Tracks

Sort By A to Z

Options New

Select Multiple and ...

Search By

Select All and. . .

Set As Default

S00006

S00009

S00025

S00026

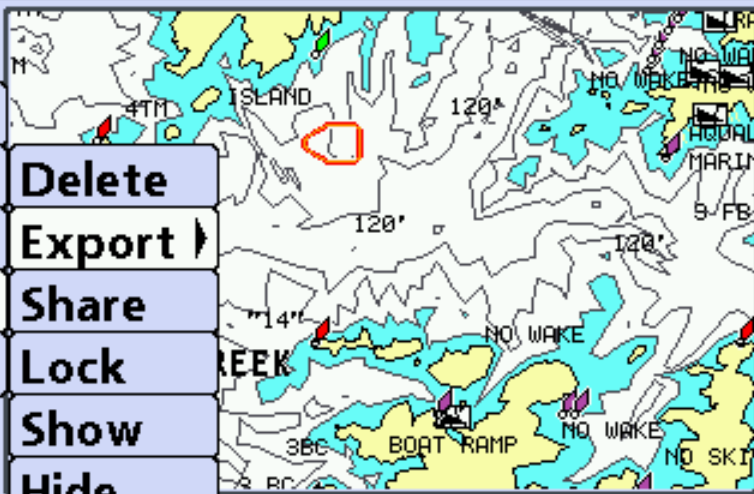
S00027

S00028

S00029

Home

Default Group: Home



Delete

Export

Share

Lock

Show

Hide

Select An Item To
View Information

Doing so will give you some additional options. You need to use the Down Arrow to select "Export".



Depth | ft
24.6
COG | °t
270
N 34.20034°
W 083.99533°











Speed | mph
4.5

Waypoints, Routes, Tracks

Sort By **A to Z**

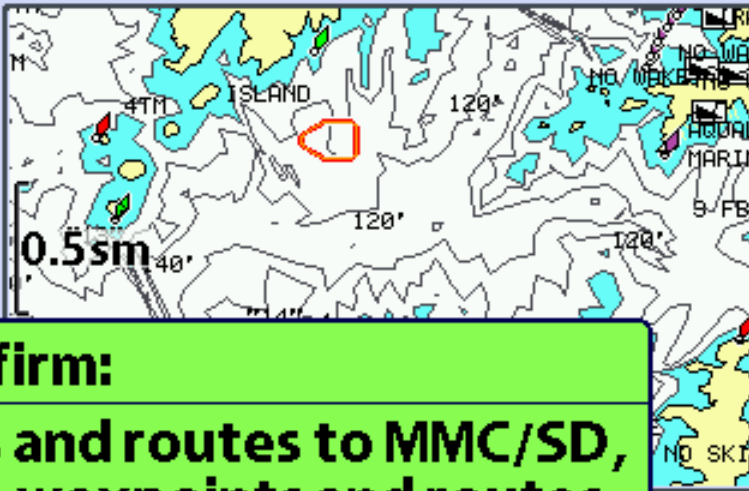
Options ▾



-  R00008
-  S00004
- 
- 
- 
- 
- 
-  S00027
-  S00028
-  S00029

Home

Default Group: Home



! Confirm:

Save tracks, waypoints and routes to MMC/SD, overwriting ALL tracks, waypoints and routes on the MMC/SD card.

◀ No **Yes ▶**

Select An Item To View Information

Once you have selected “Export”, you should see the message above that will ask you to confirm that you want to save the Nav Data you selected. Use the Right Arrow to select “Yes” and confirm that this is what you want to do. You should see a brief message that the Nav Data was sent to the memory card. Your selected Nav Data should now be on the memory card in your unit.