



HUMMINBIRD. Advanced Sonar

Using Humminbird Sonar Systems to Identify & Catch More Fish

Doug Vahrenberg
Humminbird Pro-Team



HUMMINBIRD. Advanced Sonar

The 3 Sonars



HUMMINBIRD® Advanced Sonar



200 kHz = 20 Degrees
1/3 of Depth Coverage

83 kHz = 60 Degrees
Equal Coverage

Humminbird Switchfire Sonar
Dual Beam Plus Sonar



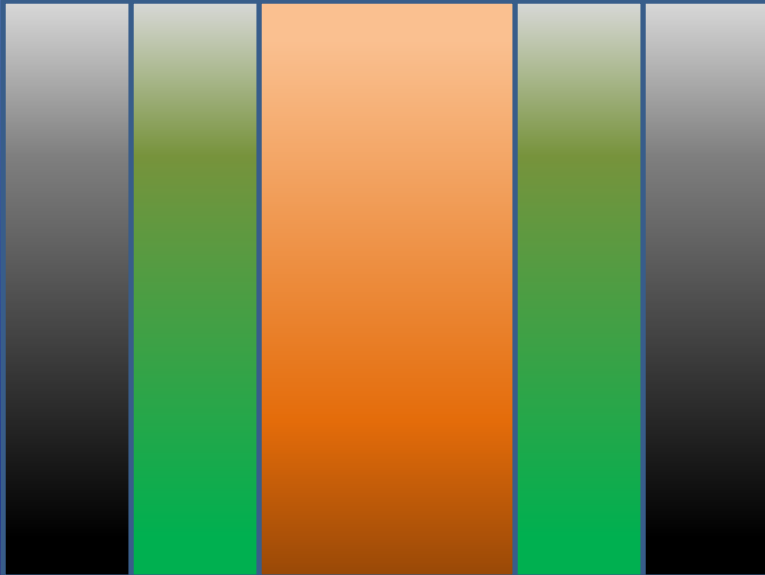
HUMMINBIRD® Advanced Sonar



Wide: 1.5 X Depth Coverage

Medium: Equal to Depth Coverage

Narrow: 1/3 of Depth Coverage

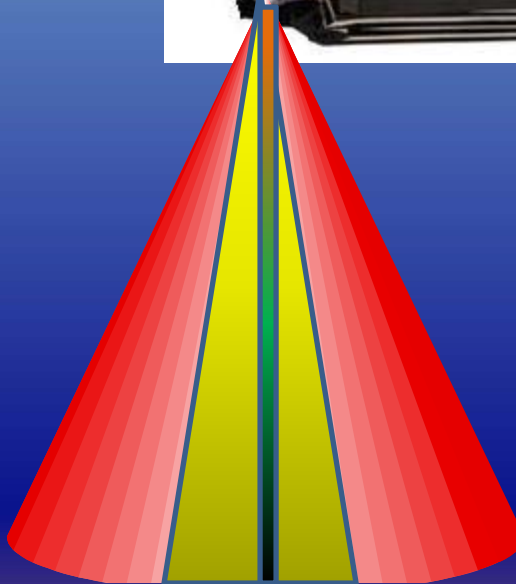


Down Imaging
REAR VIEW

Humminbird Down Imaging Sonar



HUMMINBIRD® Advanced Sonar



Down Imaging SIDE VIEW

Humminbird Down Imaging Sonar



HUMMINBIRD® Advanced Sonar

Side Imaging
REAR VIEW

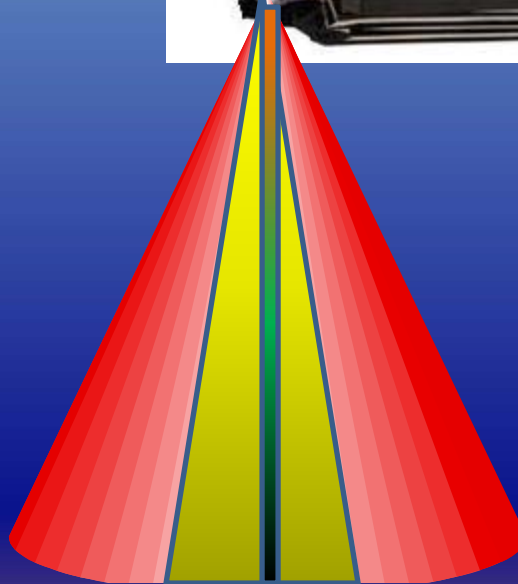


Area of Coverage:
User Defined

Humminbird Side Imaging Sonar



HUMMINBIRD® Advanced Sonar



Side Imaging
SIDE VIEW

Humminbird Down Imaging Sonar



HUMMINBIRD® Advanced Sonar

Set-up is key...

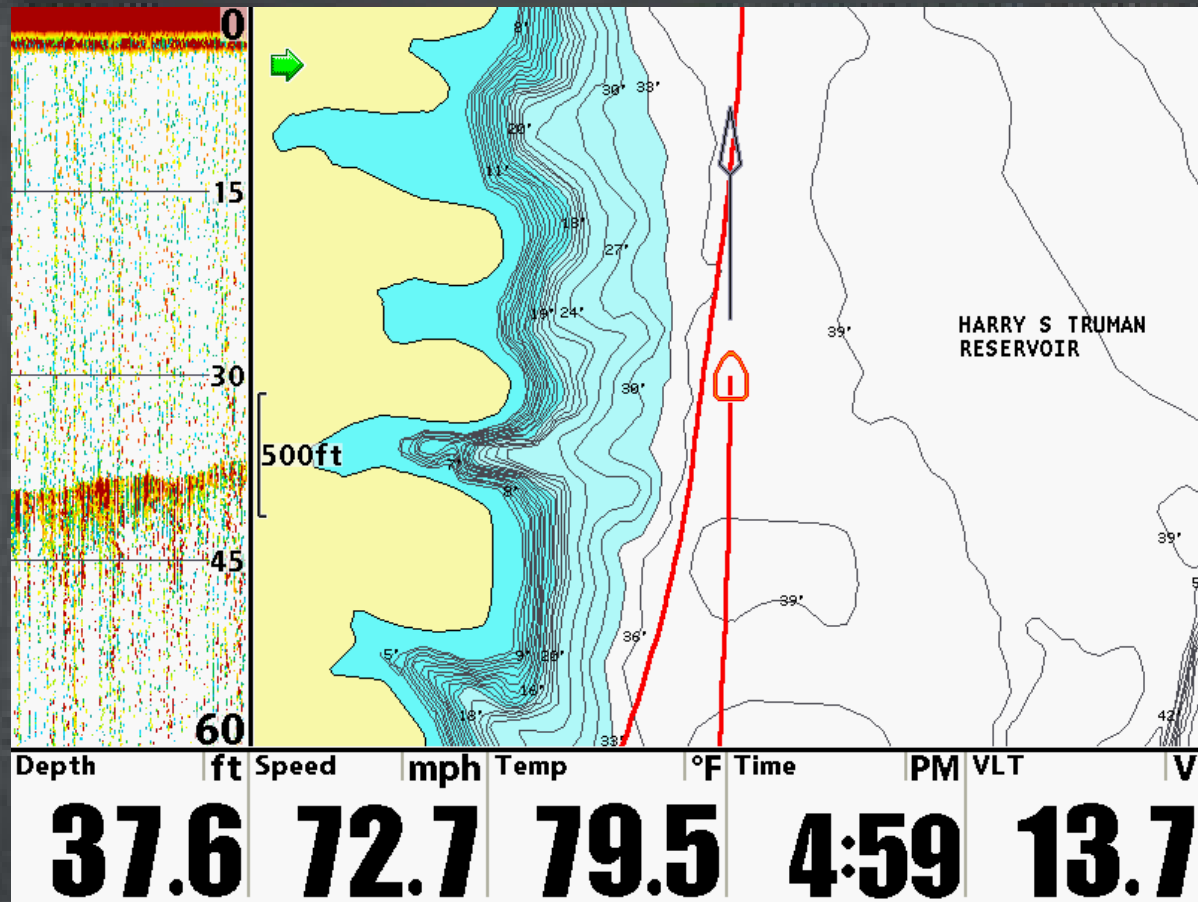
- 1) 200/83 kHz Combo finds fish
- 2) 200 kHz Only for High Speed
- 3) Switchfire Clear Mode < 10 Foot
- 4) Switchfire Max Mode > 10 Foot
- 5) Adjust Sensitivity to clear Clutter
- 6) Scroll Speed Match Boat Speed

Humminbird Switchfire 2D Sonar



HUMMINBIRD®

Dual Beam Plus



200kHz Holds at 70mph+



HUMMINBIRD® Advanced Sonar

Set-up is key...

- 1) Chart Speed match Boat Speed
- 2) Increase Sensitivity +1 or +2
- 3) Changing Terrain – Set Max Depth
- 4) NEW – Down Imaging Zoom

Humminbird Down Imaging Sonar



HUMMINBIRD® Advanced Sonar

Set-up is key...

- 1) Match Chart Speed to Boat Speed
- 2) Adjust Sensitivity to show details
- 3) Adjust Coverage Area
- 4) Slow Steady Straight Boat Speed
- 5) Choose Color Pallet best for you
- 6) Side Imaging Enhance

Humminbird Side Imaging Sonar