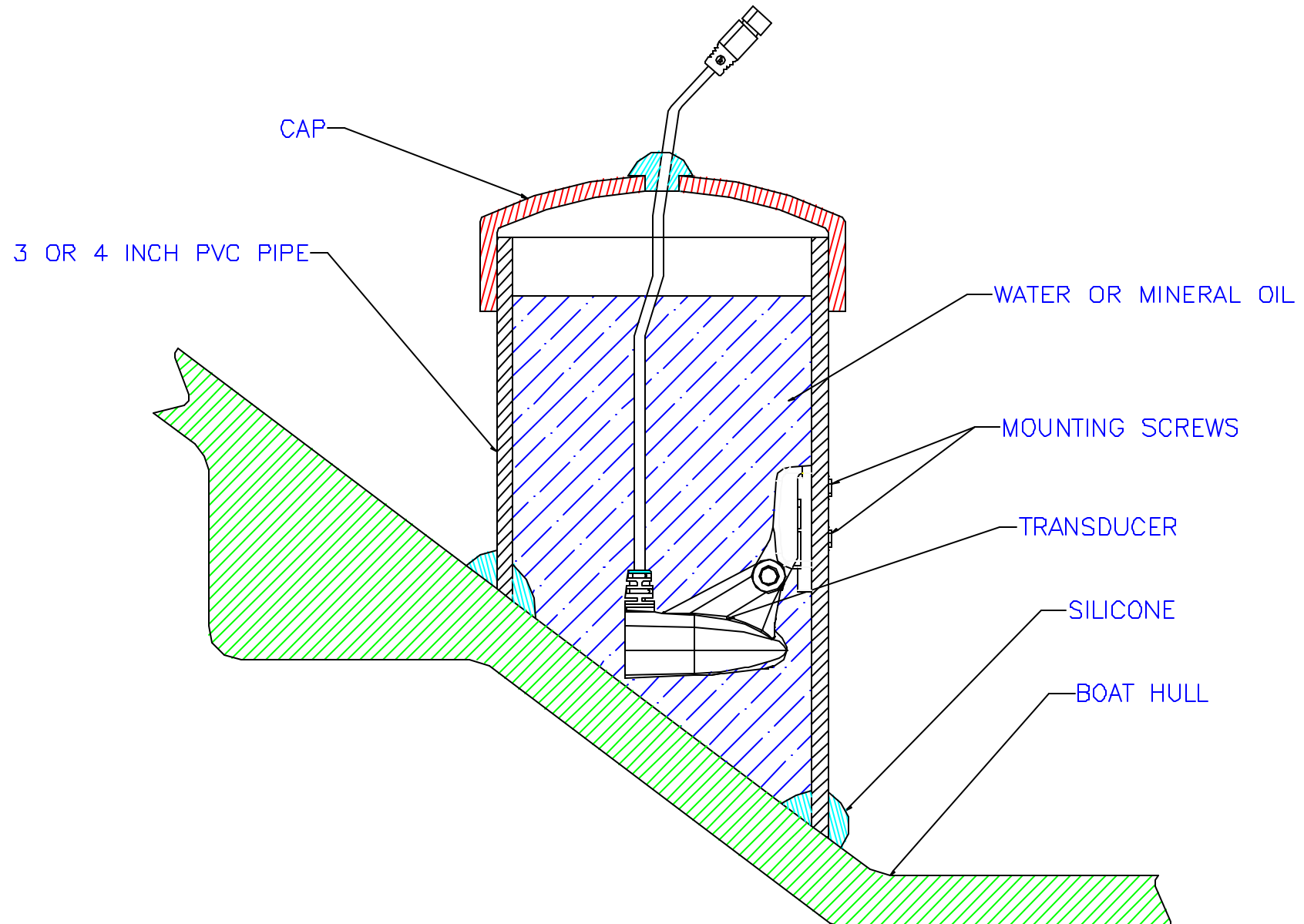


High Dead Rise Optional In-Hull Installation



Notes / options:

Please note that the transducer must be pointed / oriented in the correct direction if it is directional. Normally this is with the front / nose / pointed end towards the bow of the boat. The transducer is shown from a side view above for illustration purposes only.

You may use whatever material you would like (epoxy, fiberglass resin, silicone,...) to bond the PVC pipe to the hull.

An additional filler liquid that can be used is Non-toxic antifreeze/coolant (propylene glycol).

Other materials may be used in place of the PVC pipe. These do not have to be round in shape but must allow for the transducer to be mounted to the inside so that the face of the transducer is pointed straight down into the water.